

Preparing Output Files for Brisque and PS/M

Copyright

Copyright © 2004 Creo Inc. All rights reserved.

No copying, distribution, publication, modification, or incorporation of this document, in whole or part, is permitted without the express written permission of Creo. In the event of any permitted copying, distribution, publication, modification, or incorporation of this document, no changes in or deletion of author attribution, trademark legend, or copyright notice shall be made.

No part of this document may be reproduced, stored in a retrieval system, published, used for commercial exploitation, or transmitted, in any form by any means, electronic, mechanical, photocopying, recording, or otherwise, without the express written permission of Creo Inc.

This document is also distributed in Adobe Systems Incorporated's PDF (Portable Document Format). You may reproduce the document from the PDF file for internal use. Copies produced from the PDF file must be reproduced in whole.

.....

Trademarks

The Creo wordmark, Creo logo, and the names of the Creo products and services referred to in this document are trademarks of Creo Inc.

Adobe, Acrobat, and the Acrobat logo are registered trademarks of Adobe Systems Incorporated, and are registered in the U.S. Patents and Trademark Office and may be registered in other jurisdictions.

Apple, AppleTalk, AppleShare, EtherTalk, LocalTalk, Macintosh, and LaserWriter are trademarks of Apple Computer, Inc.

Microsoft, Windows, Windows 2000, and Windows NT are trademarks or registered trademarks of Microsoft Corp.

Xerox is a registered trademark of Xerox Corp.

Other brand or product names are the trademarks or registered trademarks of their respective owners.

.....

FCC Compliance

The Creo equipment referred to in this document complies with the requirements in Part 15 of FCC Rules for a Class A computing device. Operation of the Creo equipment in a residential area may cause unacceptable interference to radio and TV reception, requiring the operator to take whatever steps are necessary to correct the interference.

.....

Limitation of Liability

The product, software or services are being provided on an "as is" and "as available" basis. Except as may be stated specifically in your contract, Creo Inc. expressly disclaims all warranties of any kind, whether express or implied, including, but not limited to, any implied warranties of merchantability, fitness for a particular purpose and non-infringement.

You understand and agree that Creo Inc. shall not be liable for any direct, indirect, incidental, special, consequential or exemplary damages, including but not limited to, damages for loss of profits, goodwill, use, data or other intangible losses (even if Creo has been advised of the possibility of such damages), resulting from: (i) the use or the inability to use the product or software; (ii) the cost of procurement of substitute goods and services resulting from any products, goods, data, software, information or services purchased; (iii) unauthorized access to or alteration of your products, software or data; (iv) statements or conduct of any third party; (v) any other matter relating to the product, software, or services.

The text and drawings herein are for illustration and reference only. The specifications on which they are based are subject to change. Creo Inc. may, at any time and without notice, make changes to this document. Creo Inc., for itself and on behalf of its subsidiaries, assumes no liability for technical or editorial errors or omissions made herein, and shall not be liable for incidental, consequential, indirect, or special damages, including, without limitation, loss of use, loss or alteration of data, delays, or lost profits or savings arising from the use of this document.

.....

Patents

This product is covered by one or more of the following U.S. patents:

| | | | | | | |
|-----------|-----------|-----------|-----------|-----------|-----------|-----------|
| RE37,376 | 5,325,217 | 5,532,728 | 5,742,743 | 5,996,499 | 6,158,345 | 6,353,216 |
| 4,558,302 | 5,339,176 | 5,561,691 | 5,764,374 | 5,998,067 | 6,159,659 | 6,366,339 |
| 4,743,091 | 5,343,059 | 5,568,595 | 5,764,381 | 6,003,442 | 6,164,637 | 6,371,026 |
| 4,992,864 | 5,355,446 | 5,576,754 | 5,771,794 | 6,014,471 | 6,180,325 | 6,377,739 |
| 5,049,901 | 5,359,451 | 5,579,115 | 5,785,309 | 6,016,752 | 6,181,362 | 6,387,597 |
| 5,079,721 | 5,359,458 | 5,592,309 | 5,813,346 | 6,031,932 | 6,181,439 | 6,396,422 |
| 5,103,407 | 5,367,360 | 5,594,556 | 5,818,498 | 6,043,865 | 6,186,068 | 6,396,618 |
| 5,111,308 | 5,384,648 | 5,600,448 | 5,854,883 | 6,060,208 | 6,189,452 | 6,407,849 |
| 5,113,249 | 5,384,899 | 5,608,822 | 5,861,904 | 6,063,528 | 6,191,882 | 6,414,755 |
| 5,122,871 | 5,412,491 | 5,615,282 | 5,861,992 | 6,063,546 | 6,204,874 | 6,422,801 |
| 5,124,547 | 5,412,737 | 5,625,766 | 5,875,288 | 6,072,518 | 6,208,369 | 6,435,091 |
| 5,132,723 | 5,420,702 | 5,636,330 | 5,894,342 | 6,090,529 | 6,214,276 | 6,441,914 |
| 5,150,225 | 5,420,722 | 5,649,220 | 5,900,981 | 6,096,461 | 6,217,965 | 6,450,092 |
| 5,153,769 | 5,459,505 | 5,650,076 | 5,934,196 | 6,098,544 | 6,260,482 | 6,456,396 |
| 5,155,782 | 5,473,733 | 5,652,804 | 5,942,137 | 6,107,011 | 6,266,080 | 6,476,931 |
| 5,157,516 | 5,481,379 | 5,680,129 | 5,946,426 | 6,112,663 | 6,266,134 | 6,477,955 |
| 5,208,818 | 5,488,906 | 5,691,823 | 5,947,028 | 6,115,056 | 6,267,054 | 6,509,903 |
| 5,208,888 | 5,497,252 | 5,691,828 | 5,958,647 | 6,121,996 | 6,268,948 | 6,541,181 |
| 5,247,174 | 5,508,828 | 5,696,393 | 5,966,504 | 6,130,702 | 6,283,589 | 6,545,772 |
| 5,249,067 | 5,509,561 | 5,699,174 | 5,969,872 | 6,134,393 | 6,295,076 | 6,564,018 |
| 5,283,140 | 5,517,359 | 5,699,740 | 5,973,801 | 6,136,509 | 6,299,572 | |
| 5,291,273 | 5,519,852 | 5,708,736 | 5,986,819 | 6,137,580 | 6,318,266 | |
| 5,323,248 | 5,526,143 | 5,713,287 | 5,995,475 | 6,147,789 | 6,352,816 | |

.....
Creo Inc.

3700 Gilmore Way
Burnaby, B.C., Canada
V5G 4M1

Tel: +1.604.451.2700

Fax: +1.604.437.9891

<http://www.creo.com>
.....

Internal 742-00050A

Revised February 2004

Contents

| | |
|--|---------------|
| Guide Description | v |
| Using This Guide | vi |
| Guiding Principles | vi |
| Structure | vi |
| Introducing PPD Files | 1 |
| Introduction | 1 |
| Installing a PPD File | 1 |
| PPD Files for Creo Workflow Solutions | 1 |
| Module 1: Creating Output Files in Mac OS 9 | 5 |
| Lessons in This Module | 5 |
| Lesson 1: Set Up a Printer | 6 |
| Adding a Printer | 6 |
| Lesson 2: Create Output Files in FreeHand 10 | 8 |
| Create an EPS File | 8 |
| Create a PDF File | 9 |
| Create a PostScript File | 10 |
| Lesson 3: Create Output Files in InDesign 2.02 | 14 |
| Create a PDF File | 14 |
| Create a PostScript File | 17 |
| Lesson 4: Create PostScript Files in QuarkXPress 5 | 20 |
| Set Up QuarkXPress XTension Modules | 20 |
| Create a PostScript File | 21 |
| Lesson 5: Create Output Files in PageMaker | 26 |
| Create a PDF File | 26 |
| Create a PostScript File | 27 |
| Lesson 6: Create Output Files in Illustrator 10 | 29 |
| Create a PDF File | 29 |
| Create an EPS File | 31 |
| Create a PostScript File | 32 |
| Lesson 7: Create PDF Files in Acrobat Distiller 5.0 | 35 |
| Convert a PostScript File to PDF | 35 |
| Set the Job Options | 37 |
| Module 2: Generating an Output File on Mac OS X | 41 |
| Lessons in This Module | 41 |
| Lesson 1: Set Up a Printer | 42 |
| Adding a Printer | 42 |
| Lesson 2: Create Output Files in FreeHand 10 | 44 |
| Create an EPS File | 44 |
| Create a PDF File | 45 |
| Create a PostScript File | 46 |

| | |
|--|-----------|
| Lesson 3: Create Output Files in InDesign 2.02 | 49 |
| Create a PDF File | 49 |
| Create a PostScript File | 52 |
| Lesson 4: Create PostScript Files in QuarkXPress 6 | 55 |
| Create a PostScript File | 55 |
| Lesson 5: Create Output Files in Illustrator 10 | 59 |
| Create a PDF File | 59 |
| Create an EPS File | 61 |
| Create a PostScript File | 62 |
| Lesson 6: Create PDF Files in Acrobat Distiller 6.0 | 65 |
| Distill PostScript to PDF | 65 |
| Set the Job Options | 67 |
| Appendix: PostScript Terms and Concepts | 71 |

Guide Description

| | |
|------------------------------|---|
| Guide Description | This guide explains how to create PostScript®, EPS and PDF files in popular Macintosh DTP applications. |
| Target Audience | This guide is intended for prepress, Brisque® and PS/M operators. |
| Student Prerequisites | Familiarity with Macintosh operating system and DTP applications. |

Using This Guide

Guiding Principles

This book is intended to provide some basic instructions for generating PostScript, PDF and EPS files from some of the popular desktop applications. It is Not meant to be exhaustive or cover every scenario, the guide offers a starting point for operators who might not be familiar with methods of generating files for the Creo PS/M and Brisque workflow solutions.

The steps in this book are numbered in the order in which you should perform them. In most cases, the steps also point to the applicable screen areas in the illustrations. Be sure to follow the steps according to the numbered sequence.

Structure

- This guide consists of two modules:
 - Module 1 provides detailed instructions on creating output files in a Mac OS® 9 environment.
 - Module 2 provides detailed instructions on creating PostScript® and PDF files in a Mac OS X environment.
- The information for each application is provided in the form of a lesson.

We hope that you will find the guide useful, and we encourage you to send us feedback. Your comments will help us improve the quality of the training program.

Introducing PPD Files

Introduction

PPD stands for PostScript printer description. A PPD file describes the capability of a PostScript output device and is used by the printer driver. When generating a PostScript file, the printer driver uses the information contained in the PPD file to provide the user with the appropriate options for the selected device and to generate a PostScript file that is fully compatible with the device.

To use a PPD file, print with a PostScript printer driver, such as the LaserWriter or Adobe® PostScript printer driver. If you do not have a PostScript printer driver, you must install and configure one before you can use a PPD file for printing.

For definitions of terms used in this guide, see the Appendix.

Installing a PPD File

In Mac OS 9

To install a PPD file, copy it to the **System Folder > Extensions > Printer Descriptions** folder.

In Mac OS X

To install a PPD file, copy it to the **Library > Printers > PPDs > Contents > Resources > en.lproj** folder.

Some applications require the PPD file to be copied to an additional location. The guide will state this requirement where applicable.

PPD Files for Creo Workflow Solutions

This book addresses two of the Creo workflow solutions, Brisque® and PS/M. Each of these solutions has its own PPD file.

The Brisque PPD file enables you to control the RIP parameters when you are working in a DTP application. Setting Brisque parameters in a DTP application is an extremely powerful option, and you should exercise it with great care. If you set Brisque parameters while creating a PostScript file, these parameters will override the corresponding settings in Brisque. Therefore, do not change Brisque parameters in the DTP application unless you received detailed instructions from the Brisque operator.

A full description of Brisque settings can be found in the Brisque documentation and is not covered in this book.

To learn how to generate PostScript files for the Creo workflow solutions, you need to understand several PPD parameters.

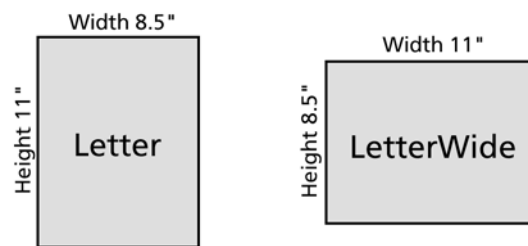
Page Size

Page size is related to the output device. Since the Brisque and PS/M software drive the same Creo output devices, the page sizes described in both PPD files are similar.

When selecting the output page size, you should take into account registration marks and the orientation and size of the document.

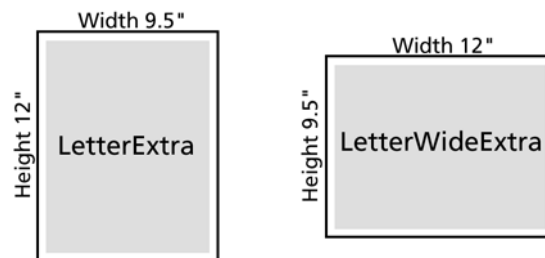
The Creo PPD files contain four options for each standard page size, as follows (the examples in parentheses relate to the Letter page size):

- Page size (**Letter**): The paper's height is greater than its width.
- Wide page size (**LetterWide**): The paper's width is greater than its height.



Basic Page Size

- Extra page size (**LetterExtra**): The paper's height is greater than its width, and the page size is enlarged by 1 inch in both directions to accommodate registration and crop marks created in the application.
- Wide extra page size (**LetterWideExtra**): The paper's width is greater than its height, and the page size is enlarged by 1 inch in both directions to accommodate registration and crop marks created in the application.

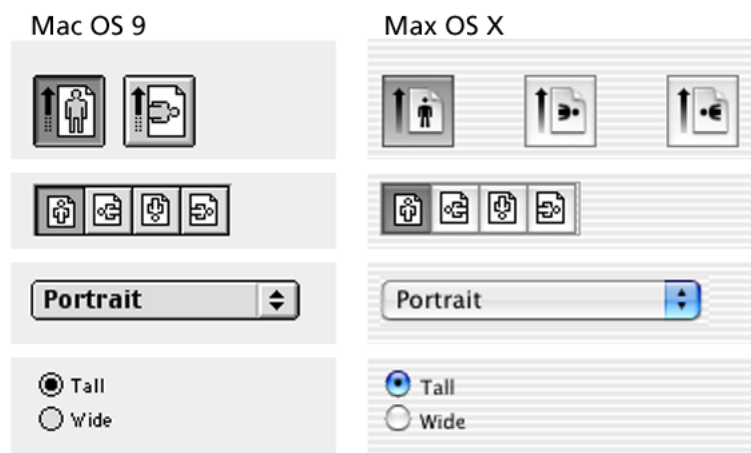


Extra Page Size

Orientation

When dealing with landscape oriented documents in Creo workflow software, *never* select landscape orientation in the Page Setup or Print dialog boxes. This will cause the page information to be rotated 90°. Leave the portrait orientation setting in the Page Setup and Print dialog boxes and select one of the “wide” page sizes in the Creo PPD file.

Depending on the application, the dialog box with the print settings expresses orientation either graphically or with the terms **Portrait/Landscape** or **Tall/Wide**.



Various Representations of Portrait Orientation

Emulsion Up/Down

The emulsion direction option controls whether the image comes out in the same direction as the original (*right-reading*) or a mirror image of the original (*wrong-reading*). The default setting, Emulsion Up, generates a right-reading file. Do not change this setting.

Negative (Inverse)

Selecting **Negative** (or **Inverse** in some applications) inverts the image colors. Do not change the **Negative** setting in the DTP application: if a negative plate or film is required, the setting should be defined in the Creo workflow software.

MODULE 1

Creating Output Files in Mac OS 9

Lessons in This Module

Lesson 1: Set Up a Printer

Lesson 2: Create Output Files in FreeHand 10

Lesson 4: Create Output Files in InDesign 2.02

Lesson 5: Create PostScript Files in QuarkXPress 5

Lesson 6: Create Output Files in PageMaker

Lesson 7: Create Output Files in Illustrator 10

Lesson 8: Create PDF Files in Acrobat Distiller 5.0

Set Up a Printer



What You Need to Know

- Adding a Printer



Note: The steps in this lesson are numbered in the order in which you should perform them. In most cases, the steps also point to the applicable screen areas in the illustrations. Be sure to follow the steps according to the numbered sequence.

Adding a Printer

- 1 From the **Apple** menu, select **Chooser**.

3 Click **LaserWriter**.

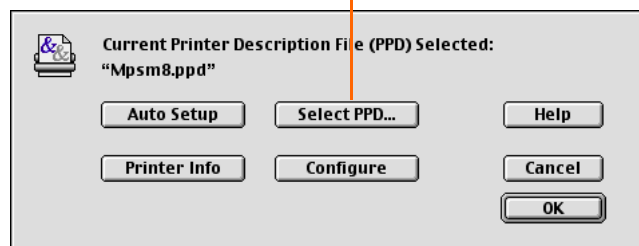
4 Select an AppleTalk zone.

5 Select a PostScript Printer.

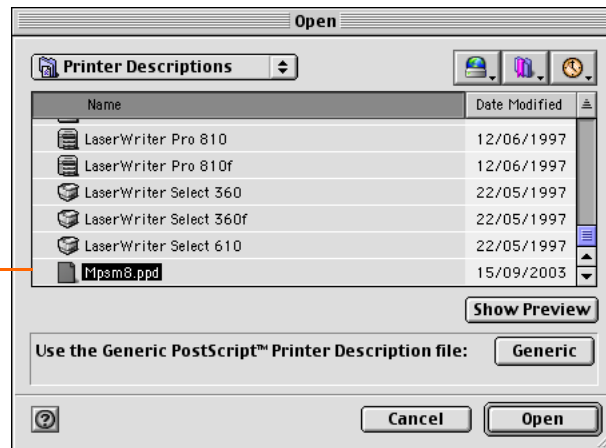
6 Click **Create**.

2 Make sure that **AppleTalk** is set to **Active**.

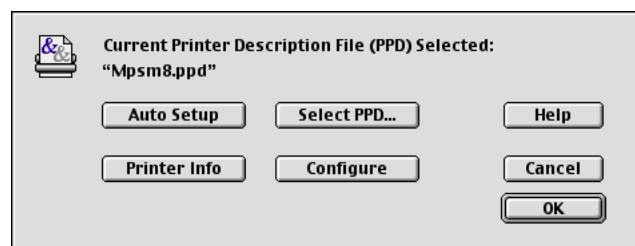
- 7 Click **Select PPD**.



- 8 Select a Creo PPD file.



- 9 Click Open.



- 10 Click OK. The printer is added to your computer with the appropriate PPD file.

Lesson
2

Create Output Files in FreeHand 10



What You Need to Know

- Create an EPS file
- Create a PDF file
- Create a PostScript file

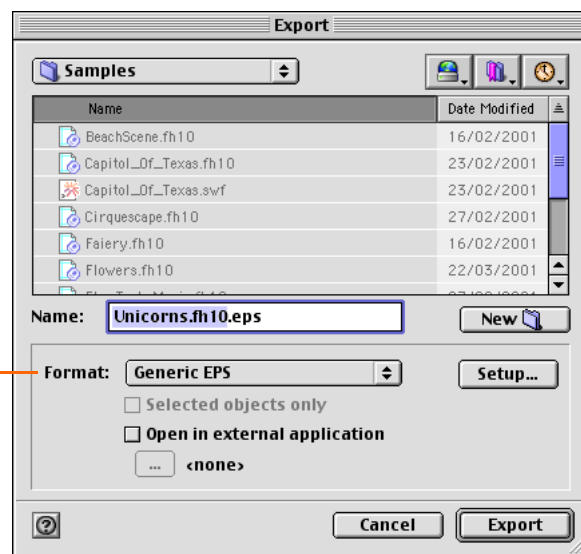


Note: The steps in this lesson are numbered in the order in which you should perform them. In most cases, the steps also point to the applicable screen areas in the illustrations. Be sure to follow the steps according to the numbered sequence.

Create an EPS File

- 1 Open a FreeHand file.
- 2 From the FreeHand **File** menu, select **Export**.

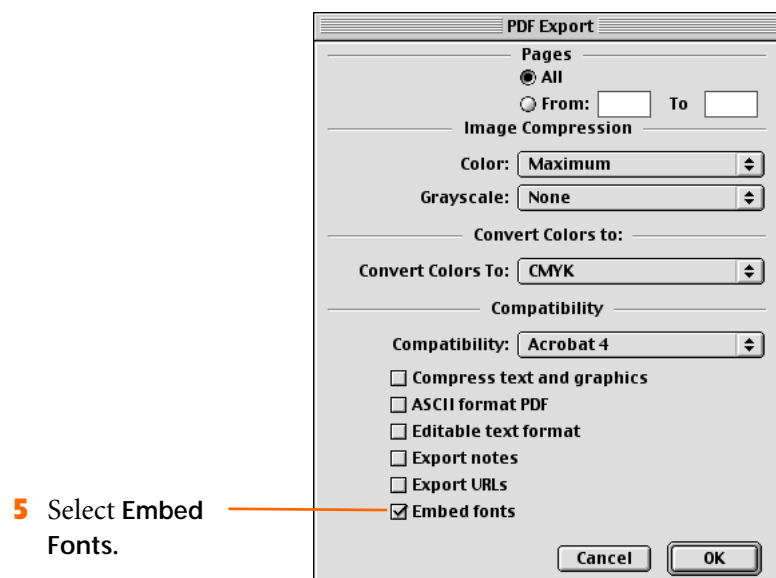
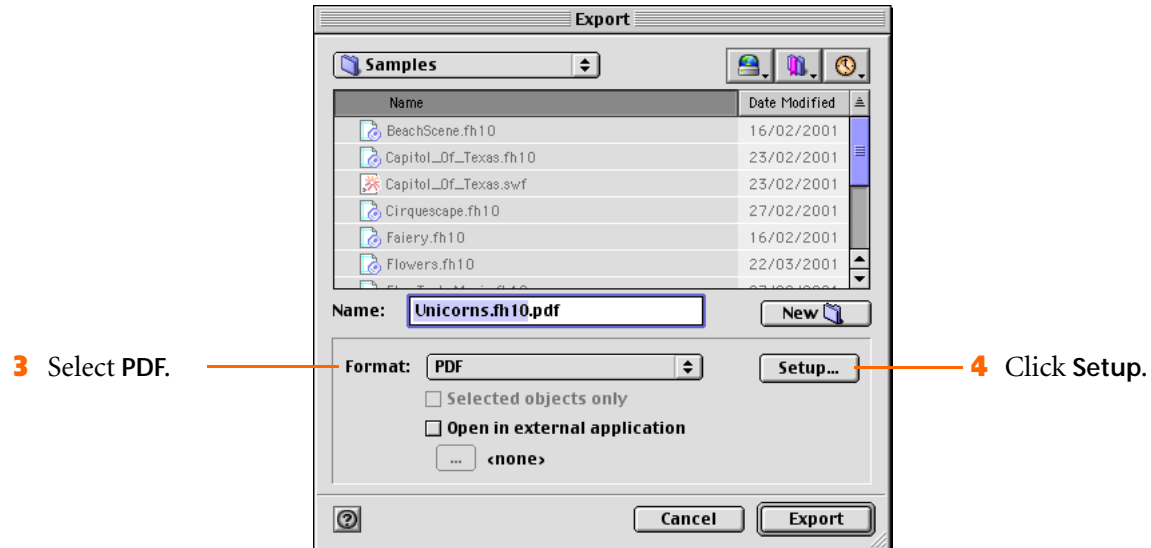
- 3 Select an EPS format.



- 4 Click **Export**. An EPS file is saved on the computer's disk.

Create a PDF File

- 1 Open a FreeHand file.
- 2 From the FreeHand **File** menu, select **Export**.

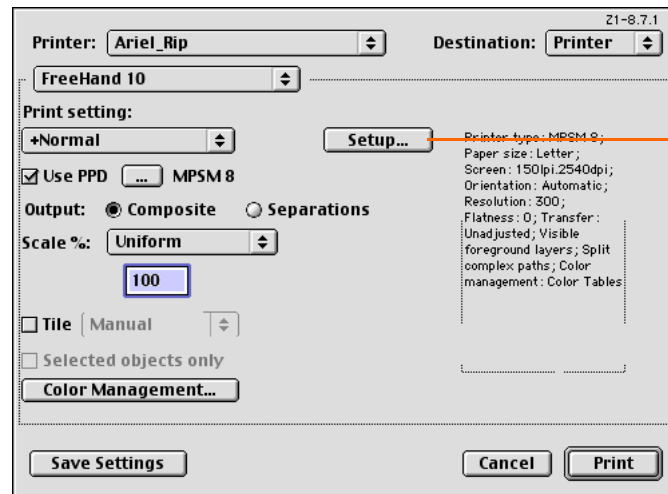
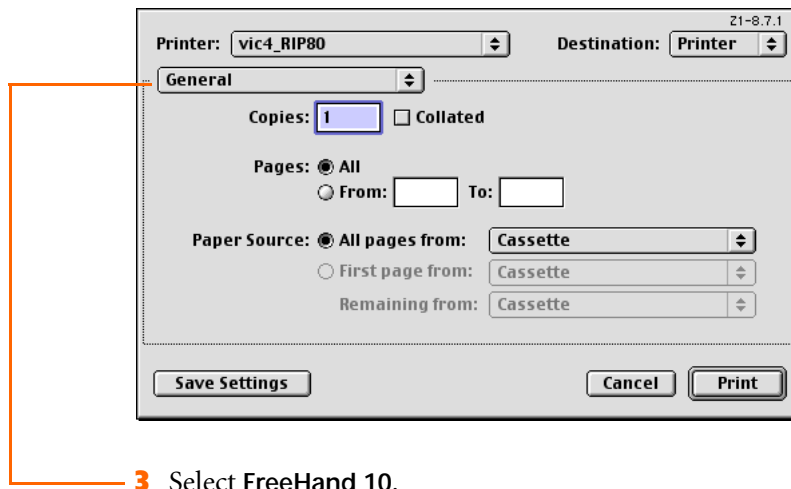


- 6 Click OK.
- 7 In the Export dialog box, click **Export**. A PDF file is saved on the computer's disk.

Create a PostScript File

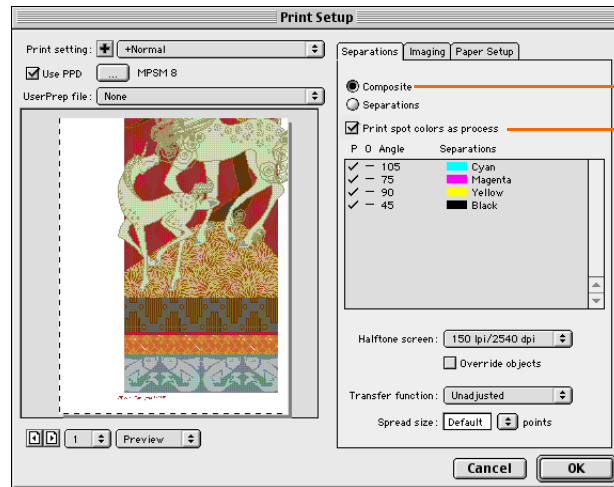
Macromedia® FreeHand® 10 software disregards the printer information that appears in the Page Setup dialog box. Instead, FreeHand provides a proprietary Print Setup dialog box, which you access from the Print dialog box.

- 1 Open a FreeHand file.
- 2 From the FreeHand **File** menu, select **Print**.





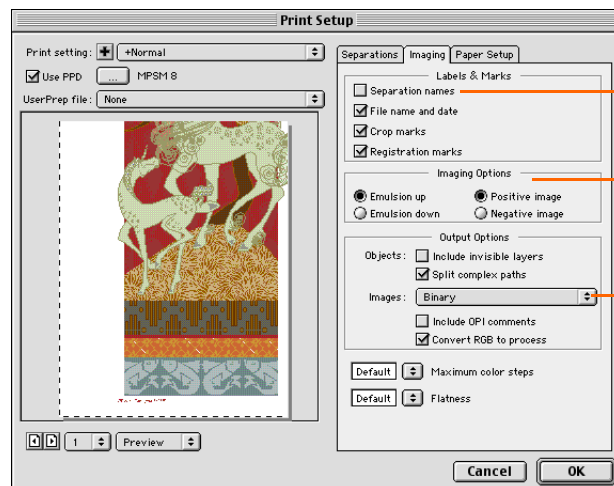
Important: Before you continue, make sure that the **Use PPD** check box is selected and that the name of the PPD file is the same as in the Print dialog box. If the name is not the same, select the **Use PPD** check box and click on the ellipsis button to select a PPD file.



5 Click **Composite**.

6 Select or clear the **Print Spot Colors as Process** check box as required.

7 Click the **Imaging** tab.



8 Clear the **Separation names** check box.

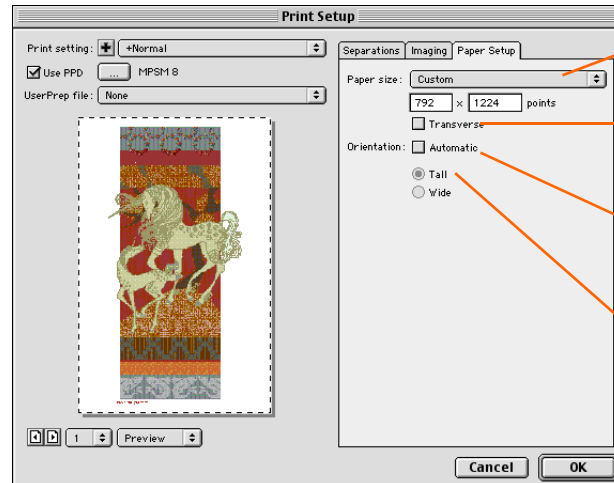
9 Select the marks you require.

10 Select **Binary**.

11 Click the **Paper Setup** tab.

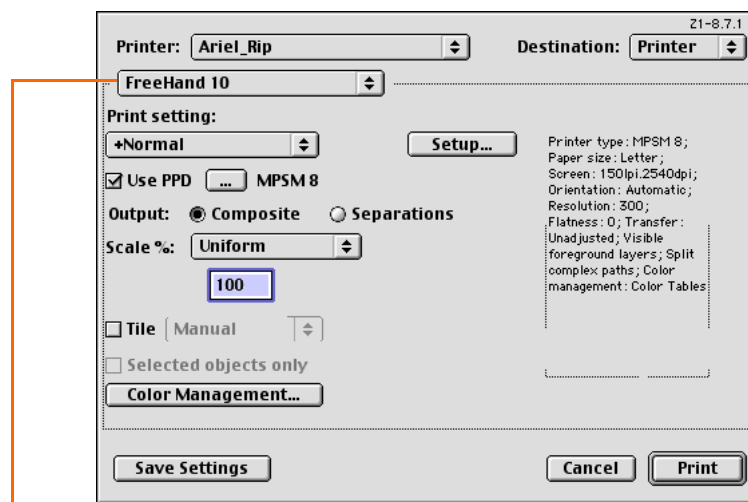


Note: You can add labels, crop marks, registration marks, and color bars either here or in the output device. If you add the marks in FreeHand, make sure that you select a large enough page size to contain the marks.

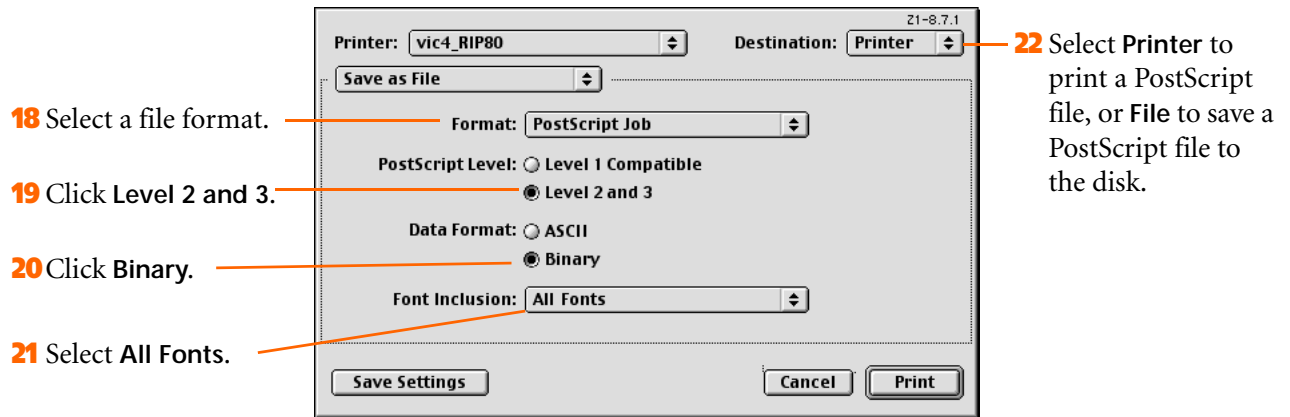


- 12** Select the appropriate paper size.
- 13** Make sure that the **Transverse** check box is cleared.
- 14** For **Orientation** clear the **Automatic** check box.
- 15** Click **Tall**.

- 16** Click **OK** to close the Print Setup dialog box.



- 17** Select **Save as File**.



23 Click **Print**. The PostScript file is created and sent to the printer, or saved on the computer's disk.

Lesson

3

Create Output Files in InDesign 2.02



What You Need to Know

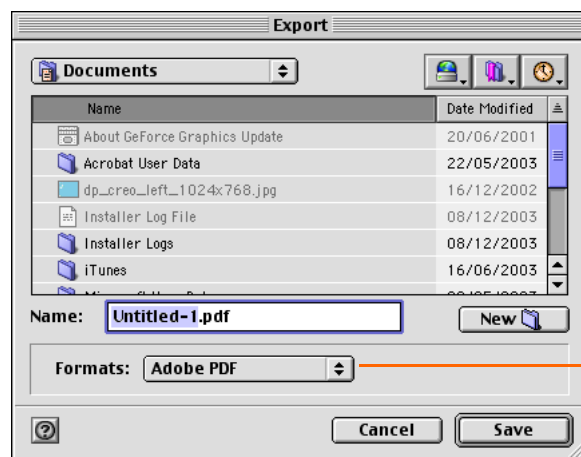
- Create a PDF file
- Create a PostScript file



Note: The steps in this lesson are numbered in the order in which you should perform them. In most cases, the steps also point to the applicable screen areas in the illustrations. Be sure to follow the steps according to the numbered sequence.

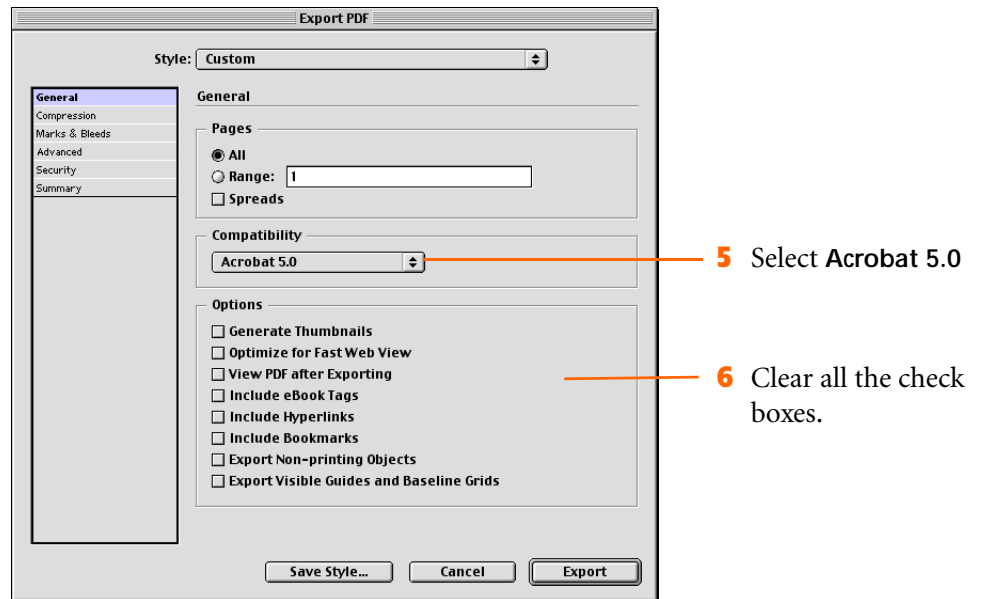
Create a PDF File

- 1 Open an InDesign file.
- 2 From the InDesign **File** menu, select **Export**.

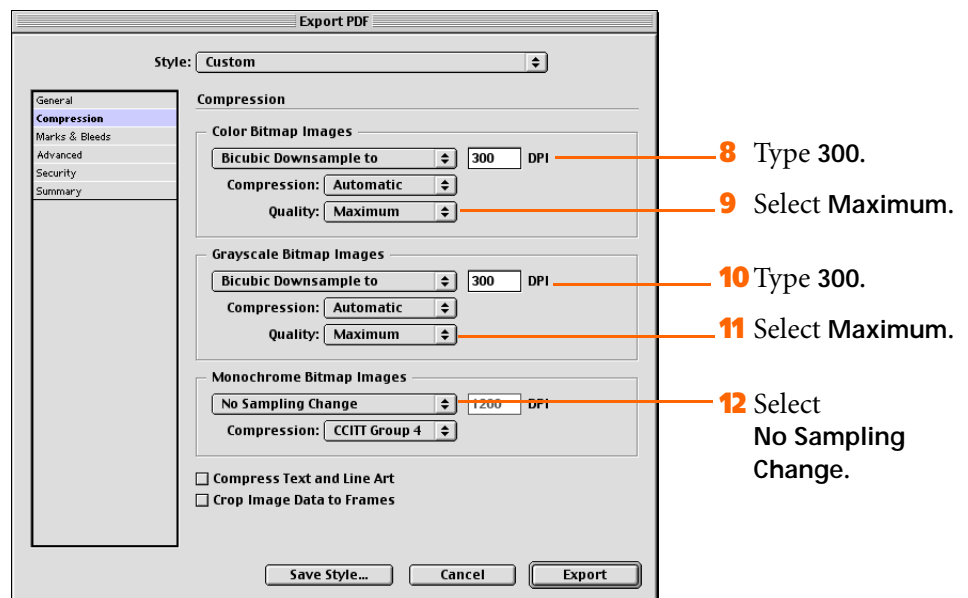


3 Select Adobe PDF.

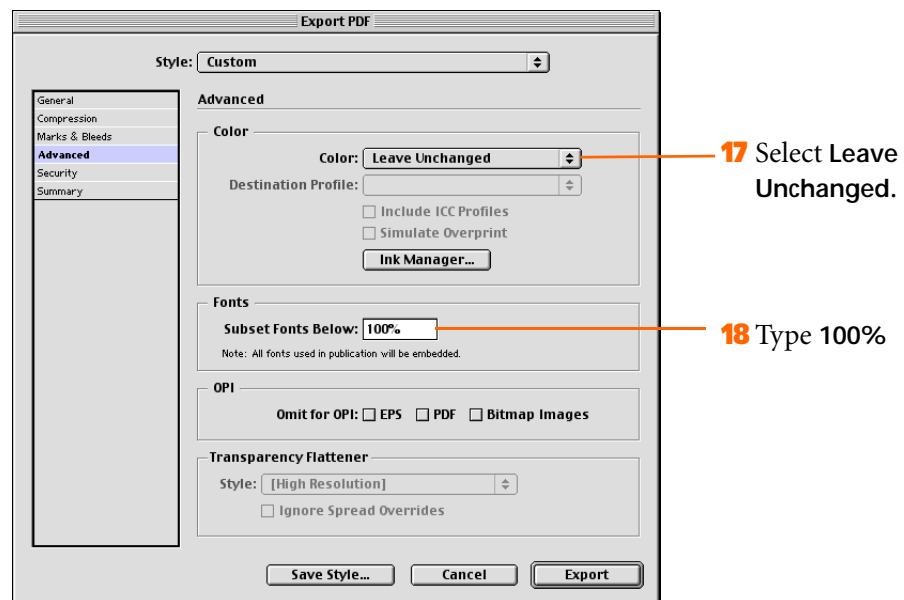
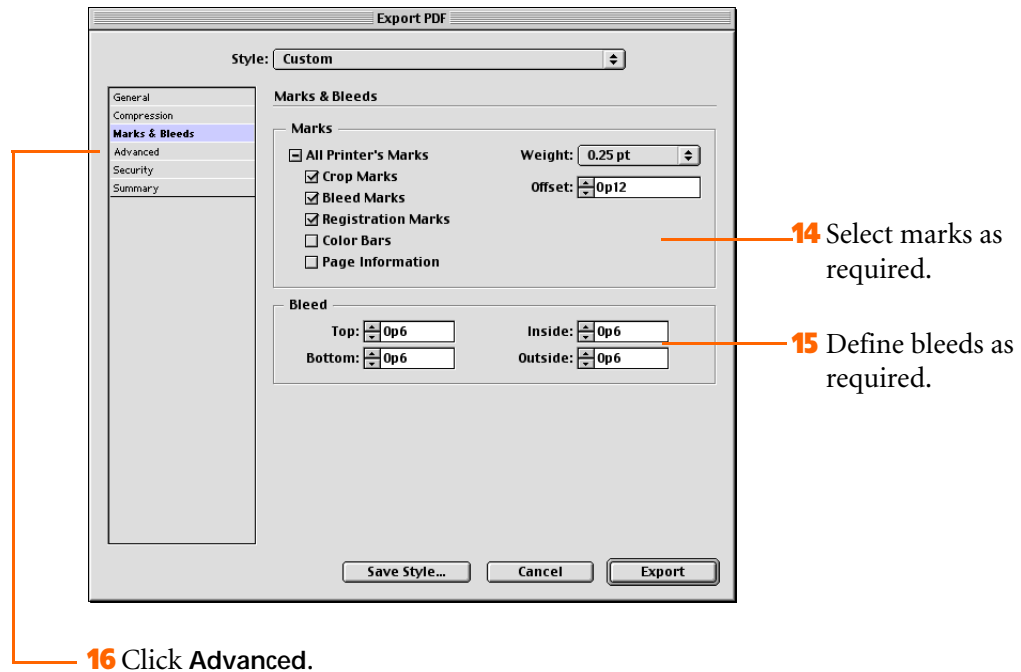
- 4 Click **Save**. A PDF file is saved on the computer's disk.



7 Click Compression.



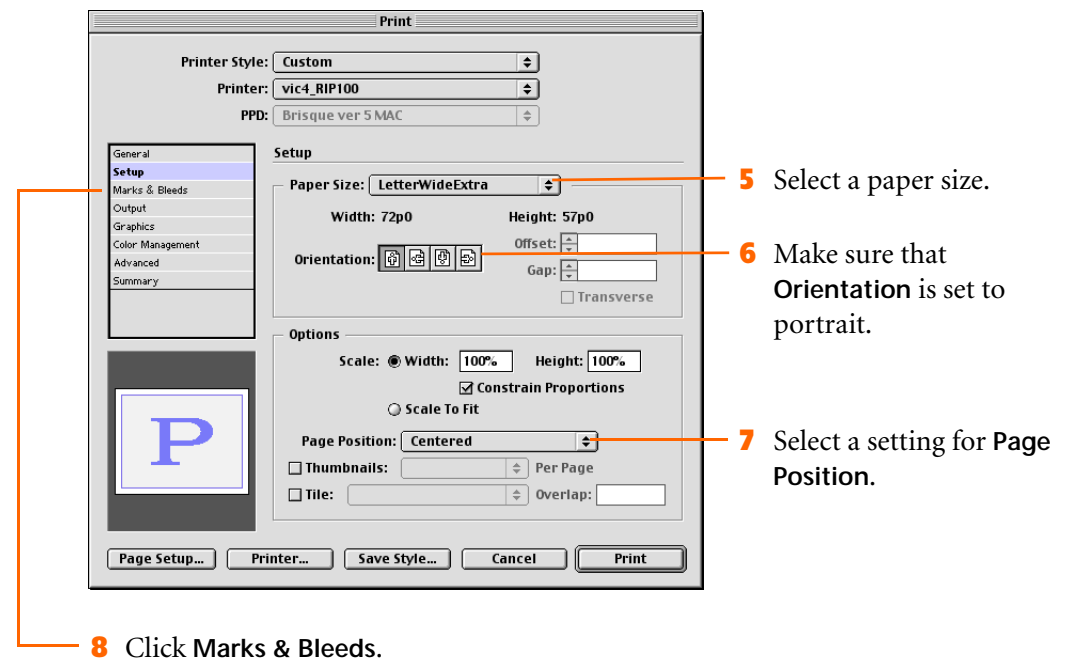
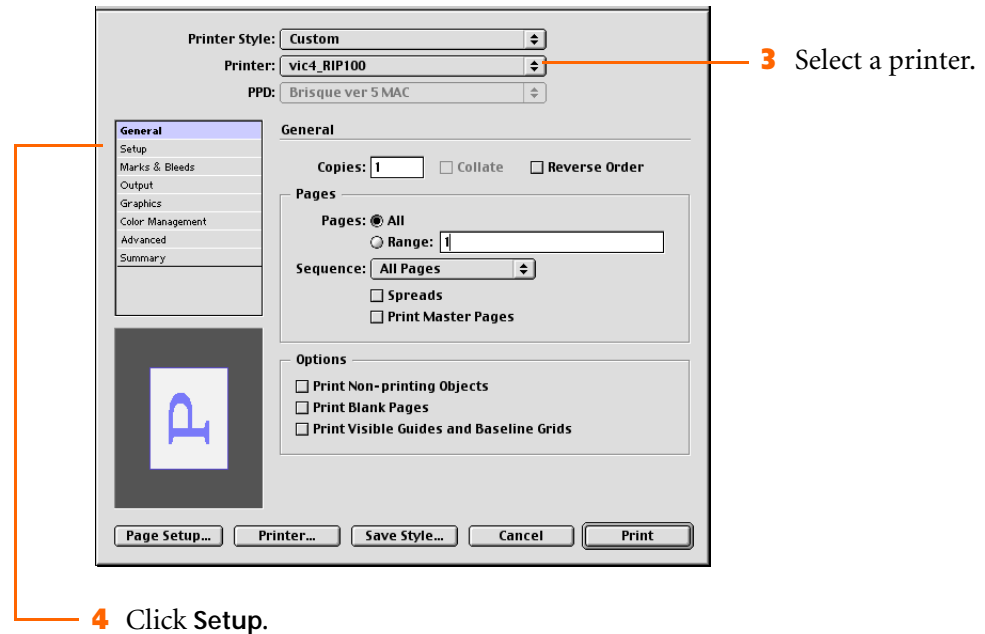
13 Click Marks&Bleeds.

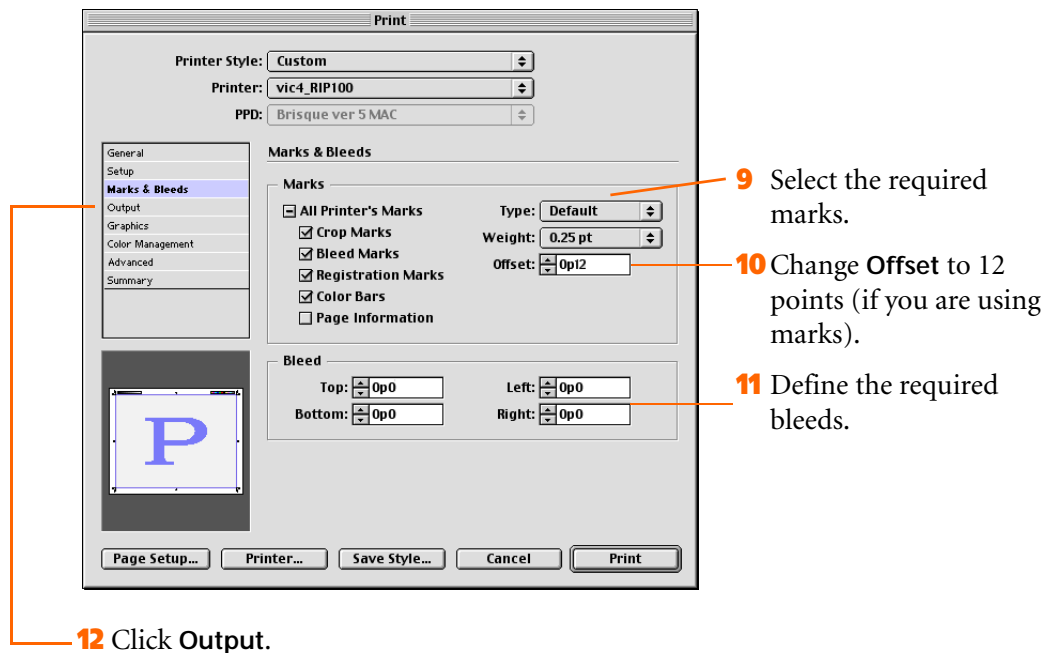


19 Click Export. A PDF file is saved on the computer's disk.

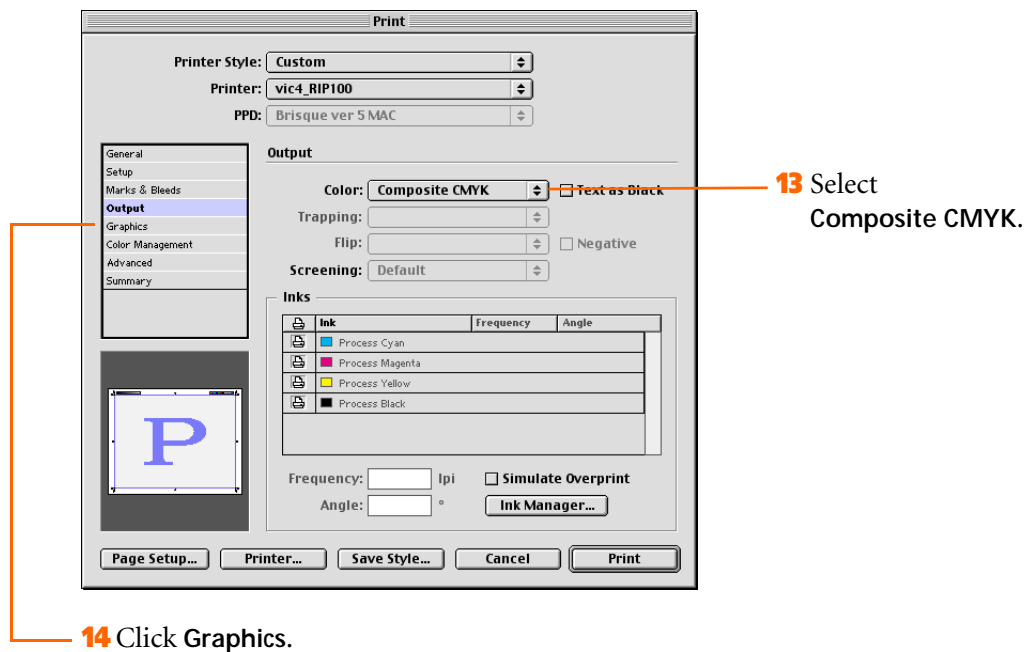
Create a PostScript File

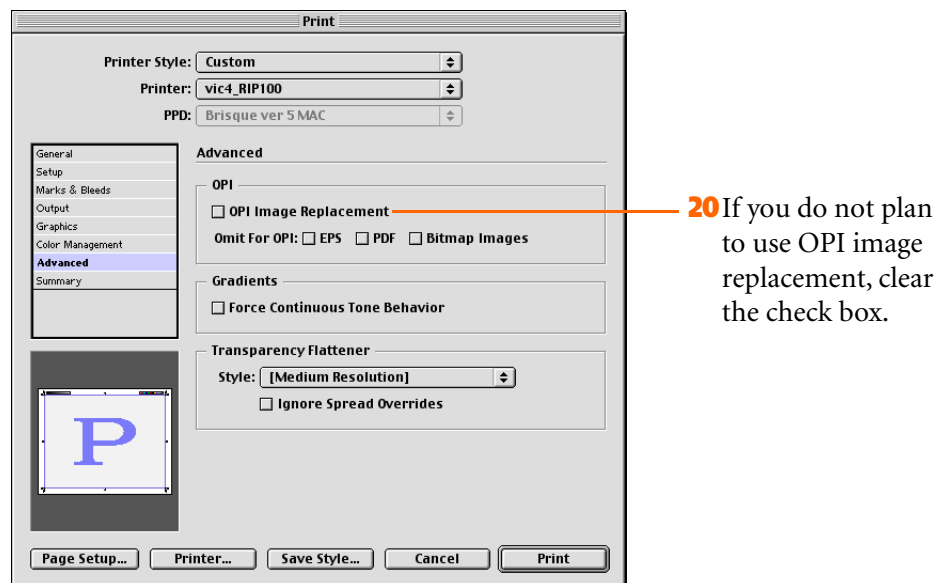
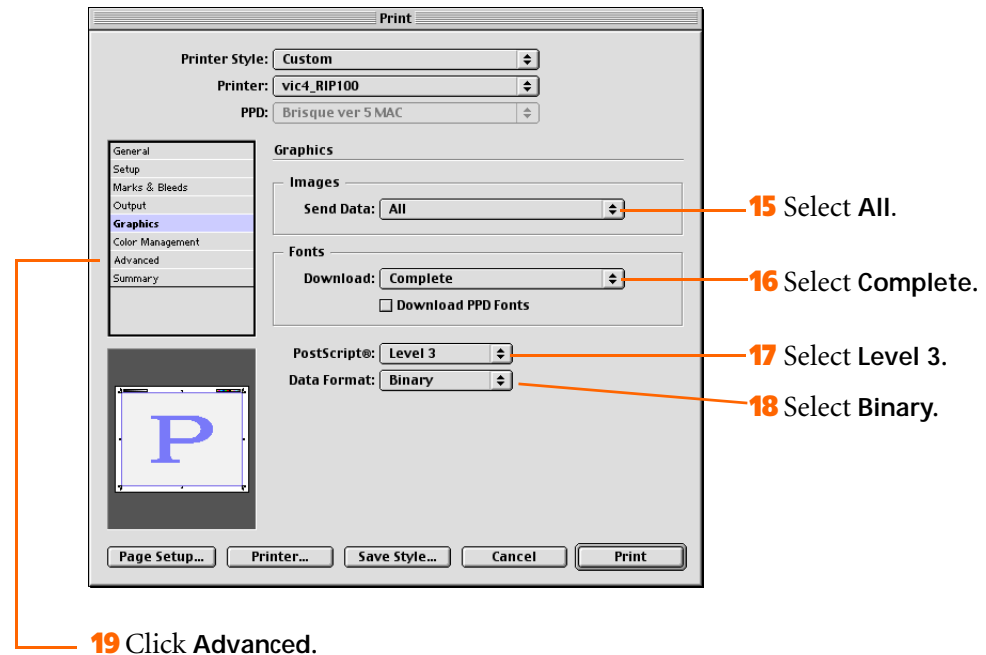
- 1 Open an InDesign file.
- 2 From the InDesign File menu, select **Print**.





Note: You can add labels, crop marks, registration marks, and color bars, either here or in the output device. If you add the marks in InDesign, make sure that you select a large enough page size to contain the marks.





21 Click **Print**. A PostScript file is created and sent to the printer.

Create PostScript Files in QuarkXPress 5



What You Need to Know

- Set up QuarkXPress XTension modules
- Create a PostScript file
- Set Printer Specific Features for Brisque and PS/M



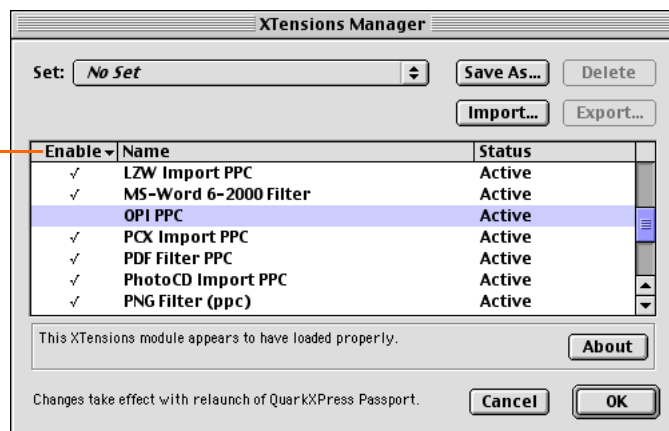
Note: The steps in this lesson are numbered in the order in which you should perform them. In most cases, the steps also point to the applicable screen areas in the illustrations. Be sure to follow the steps according to the numbered sequence.

Set Up QuarkXPress XTension Modules

To disable the OPI XTension:

- 1 From the QuarkXPress **Tools** menu, select **XTensions Manager**.

- 2 Remove the checkmark next to OPI PPC.

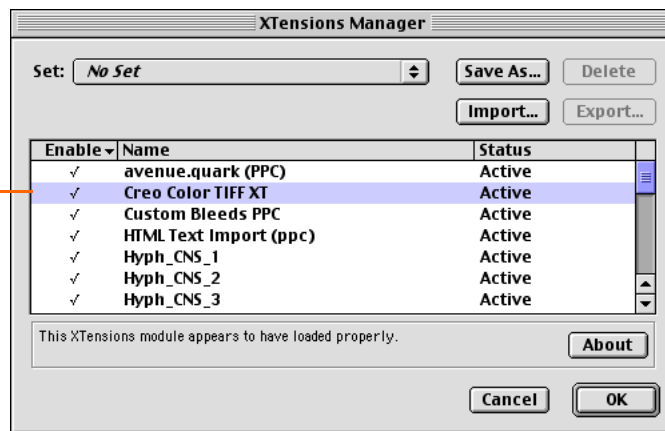


- 3 Click **OK**.

To activate the Creo Color TIFF Xtension:

- 1 Copy the Creo Color TIFF into the QuarkXPress XTension folder.
- 2 From the QuarkXPress **Tools** menu, select **XTensions Manager**.

- 3 Locate the **Creo Color TIFF** Xtension and verify that it is active.



- 4 Click **OK**.

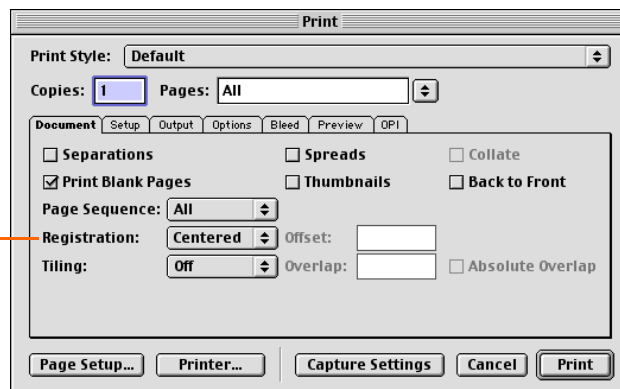
To activate the Creo Spot Color XTension:

- Copy the Spot Color XTensions into the QuarkXPress XTension folder.
For instructions on using the Creo Spot Color XTension, see the *Creo Spot Colors XTension User Guide*.

Create a PostScript File

- 1 Open a QuarkXPress file.
- 2 From the QuarkXPress **File** menu, select **Page Setup** or **Print**.

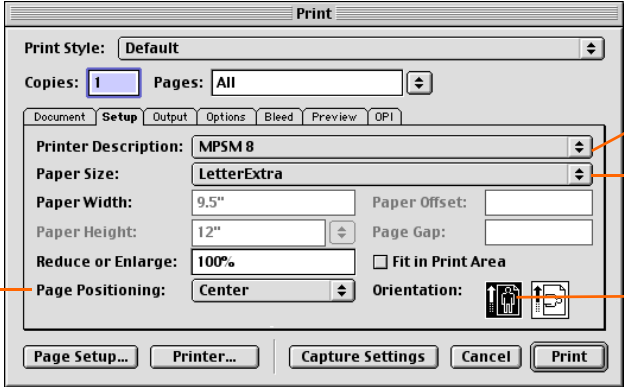
- 3 If you want to use marks, select **Centered** or **Off-center** Registration.



- 4 Click the **Setup** tab.



Note: You can add labels, crop marks, registration marks, and color bars, either here or in the output device. If you add the marks in QuarkXPress, make sure that you select a large enough page size to contain the marks.



7 Select a **Page Positioning** setting.

5 Select a Creo PPD file.

6 Select a paper size.

8 Make sure that **Orientation** is set to portrait.

9 Click the **Output** tab.

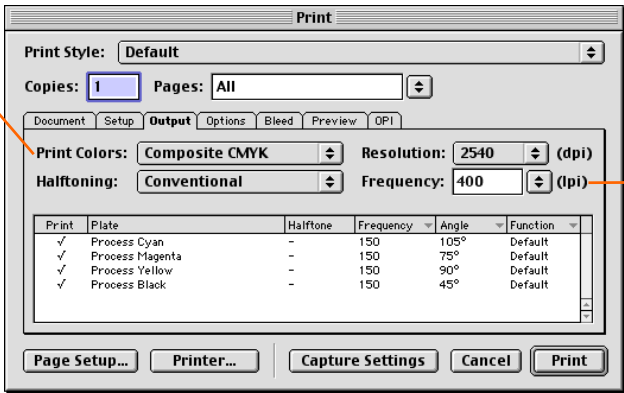


Note: If you want to set **Paper Size** to **Custom**, you must enter a setting manually for **Paper Height**. The automatic setting does not allow for page centering.

10 Select the **Print Colors** setting:

- To use process printing, select **Composite CMYK**
- To retain the spot colors, select **As Is**.

In this example we are using **Composite CMYK**.



11 Type 400.

12 Click the **Options** tab.

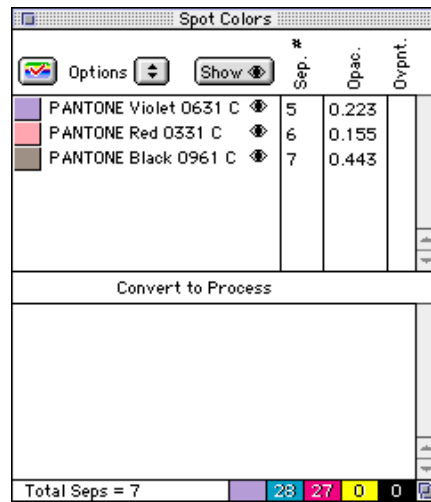
| Print | Plate | Halfone | Frequency | Angle | Function |
|-------|-----------------|---------|-----------|-------|----------|
| ✓ | Process Cyan | - | 150 | 105° | Default |
| ✓ | Process Magenta | - | 150 | 75° | Default |
| ✓ | Process Yellow | - | 150 | 90° | Default |
| ✓ | Process Black | - | 150 | 45° | Default |



Note: The **Halfoning**, **Resolution** and **Frequency** parameters are ignored by the Creo workflow software.



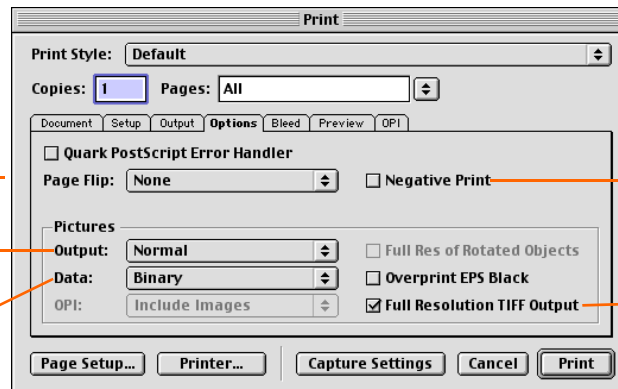
Important: If you selected **As Is** for the **Print Colors** setting, use the Creo Spot Color XTension module to retain the spot color information in the workflow software. Use the Color TIFF XTension module for correct TIFF color treatment.



13 Select **None**.

15 Select **Normal**.

16 Select **Binary**.

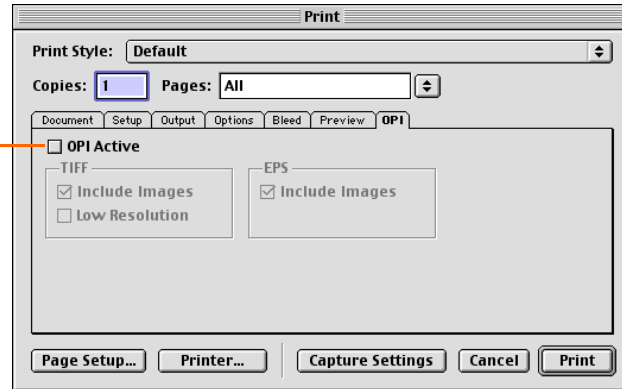


14 Clear the **Negative Print** check box.

17 Select **Full Resolution TIFF Output**.

18 Click the **OPI** tab.

19 If you do not plan to use OPI image replacement, clear the **OPI Active** check box.



20 Click **Print**. A PostScript file is created and sent to the printer.



Important: To ensure the best results when you are not using OPI image replacement, we recommend that you also deactivate the OPI XTension. See the section *Deactivate the OPI XTension* at the beginning of this lesson.

Set Printer Specific Features for Brisque and PS/M

If you want to change printer-specific settings, follow these steps:

1. In the QuarkXPress Print dialog box, click the **Printer** button.
2. From the list of printers, select a Brisque or PS/M printer.
3. In the option list, select **Printer Specific Options**.

For Brisque:

- a. In the QuarkXPress software, for the CMYK labels for **Quark 4+** option, select **Yes** to add marks; otherwise select **No**.
- b. For all the Brisque-related options, leave the default settings as they are. Changes in these settings override the Brisque template settings and effectively transfer the control of the RIP to QuarkXPress. For information about these settings, see the Brisque documentation.

For PS/M:

- In the QuarkXPress software, for the CMYK labels for **Quark 4+** option, select **Yes** to add marks; otherwise select **No**.
4. Click **Print** to close the dialog box and return to the QuarkXPress Print dialog box.

Lesson
5

Create Output Files in PageMaker



What You Need to Know

- Create a PDF file
- Create a PostScript file

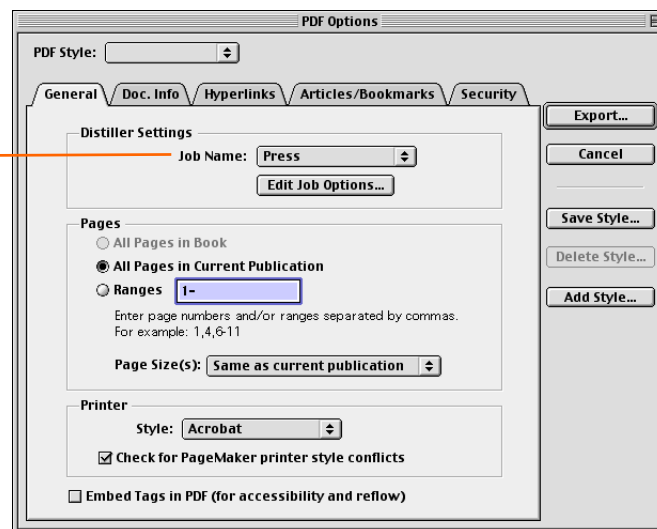


Note: The steps in this lesson are numbered in the order in which you should perform them. In most cases, the steps also point to the applicable screen areas in the illustrations. Be sure to follow the steps according to the numbered sequence.

Create a PDF File

- 1 Open a PageMaker file.
- 2 From the PageMaker **File** menu, select **Export**.

- 3 Select **Press**.

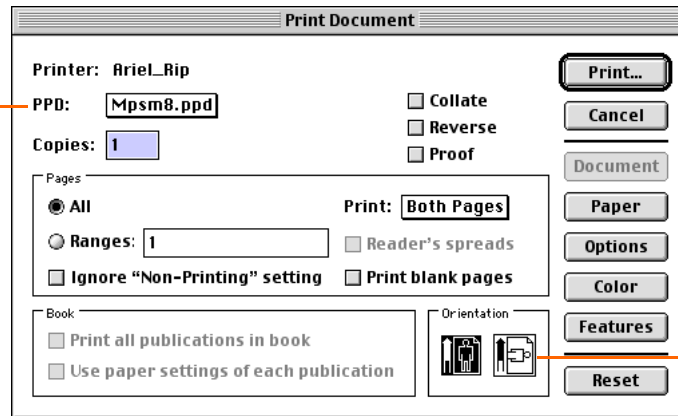


- 4 Click **Export**. A PDF file is saved on the computer's disk.

Create a PostScript File

- 1 Open a PageMaker file.
- 2 From the PageMaker **File** menu, select **Export**.

- 3 Select a Creo PPD file.

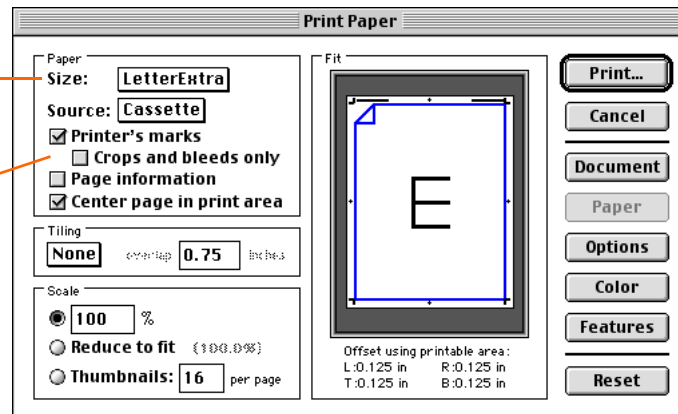


- 4 Verify that **Orientation** is set to portrait.

- 5 Click **Paper**.

- 6 Select a paper size.

- 7 Select marks if required.



- 8 Click **Options**.

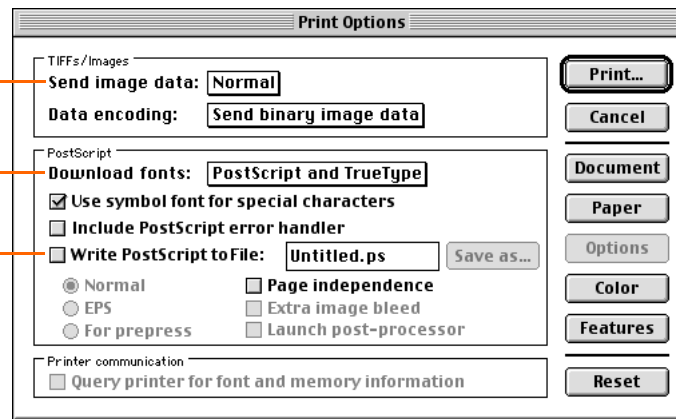


Note: If you set paper size to **Custom**, you must manually enter the **Paper Height** setting. With the automatic setting, you cannot have the page centered in the print area.

9 Select Normal.

10 Select PostScript and TrueType.

11 To save a PostScript file to disk, select Write PostScript to File.



12 Click Color.

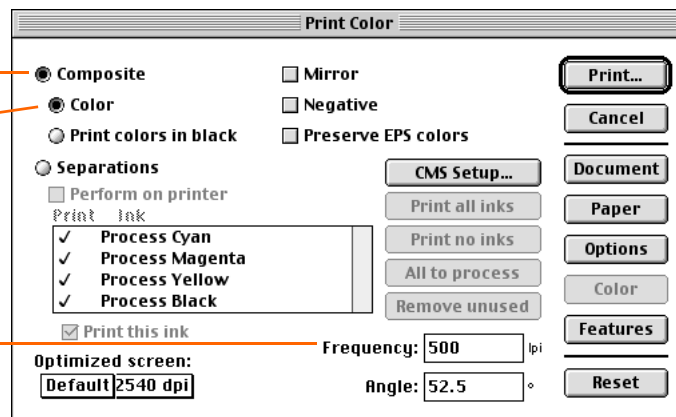


Note: If you are preparing a PostScript file for PostScript imposition in Preps® software, select the **Page Independence** check box. If this check box is not selected, the required fonts will not be found when the imposed files are RIPed.

13 Select Composite.

14 Select Color.

15 Type 500.



16 Click Print. A PostScript file is created and sent to the printer, or saved on the computer's disk.

Lesson
6

Create Output Files in Illustrator 10



What You Need to Know

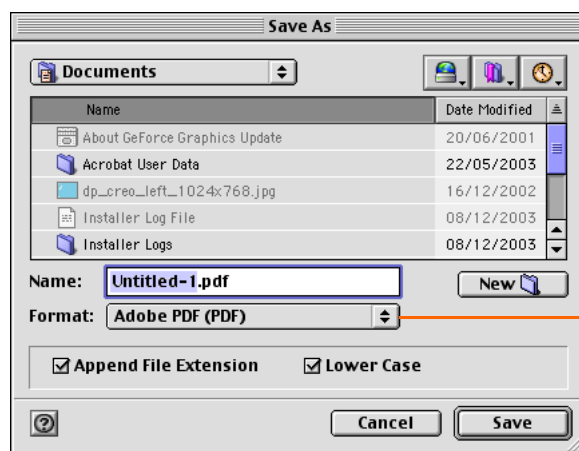
- Create a PDF file
- Create an EPS file
- Create a PostScript file



Note: The steps in this lesson are numbered in the order in which you should perform them. In most cases, the steps also point to the applicable screen areas in the illustrations. Be sure to follow the steps according to the numbered sequence.

Create a PDF File

- 1 Open an Illustrator file.
- 2 From the Illustrator **File** menu, select **Save As**.



- 3 Select **Adobe PDF (PDF)**.

- 4 Click **Save**.

5 Select Acrobat 5.0

6 Select Embed All Fonts.

7 Select Subset Fonts when less than 100% of the characters are used.

8 Select Compression.

9 Type 300.

10 Select Maximum.

11 Type 300.

12 Select Maximum.

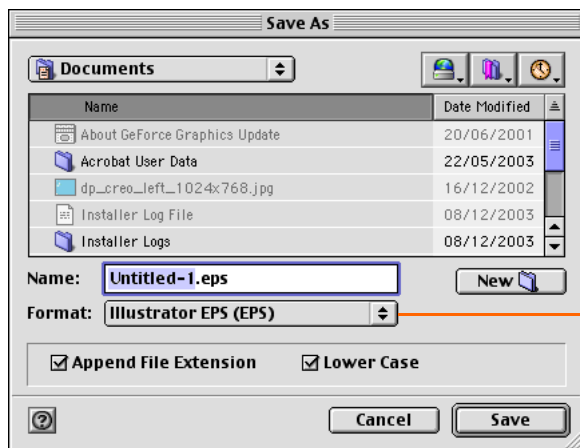
13 Clear the check boxes.

14 Click OK. A PDF file is created.

The first screenshot shows the 'Adobe PDF Format Options' dialog box with the 'Options Set' set to 'Custom'. The 'General' tab is selected. Under 'File Compatibility', 'Acrobat 5.0' is selected. Under 'Options', 'Embed All Fonts' and 'Subset fonts when less than: 100% of the characters are used' are checked. The 'Compression' tab is also visible. The second screenshot shows the 'Compression' tab. Under 'Color Bitmap Images', 'Average Downsampling at: 300 ppi', 'Compression: Automatic', and 'Quality: Maximum' are selected. Under 'Grayscale Bitmap Images', 'Average Downsampling at: 300 ppi', 'Compression: Automatic', and 'Quality: Maximum' are selected. Under 'Monochrome Bitmap Images', 'Average Downsampling at: 1200 ppi' and 'Compression: Zip' are selected, and 'Compress Text And Line Art' is checked.

Create an EPS File

- 1 Open an Illustrator file.
- 2 From the Illustrator File menu, select **Save As**.



- 3 Select **Illustrator EPS (EPS)**.

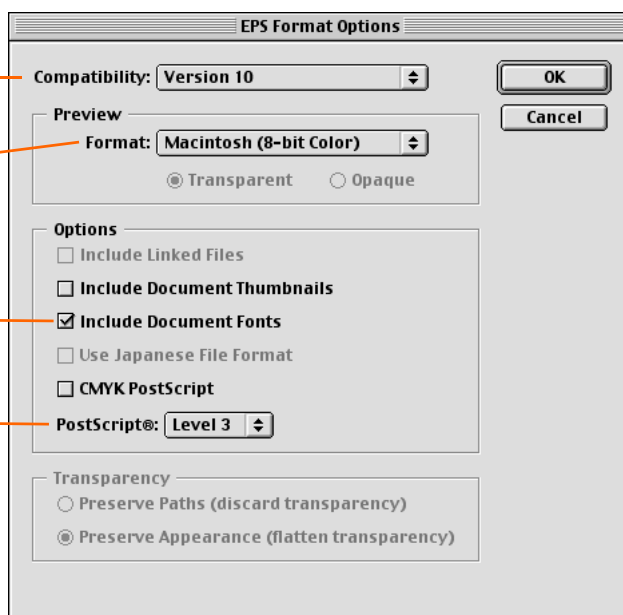
- 4 Click **Save**.

- 5 Select **Version 10**.

- 6 Select **Macintosh (8-bit Color)**.

- 7 Select **Include Document Fonts**.

- 8 Select **Level 3**.

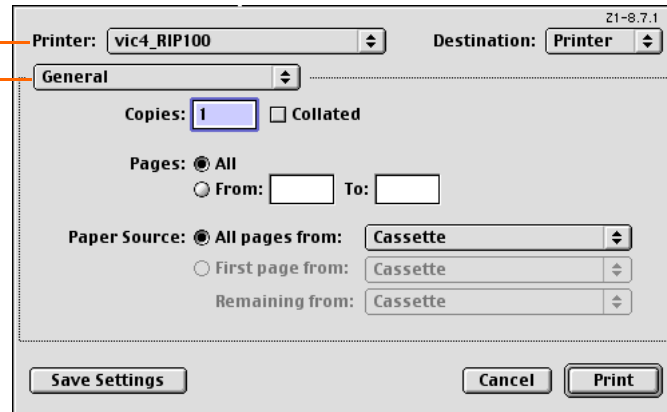


- 9 Click **OK**. An EPS file is created.

Create a PostScript File

- 1 Open an Illustrator file.
- 2 From the Illustrator **File** menu, select **Print**.

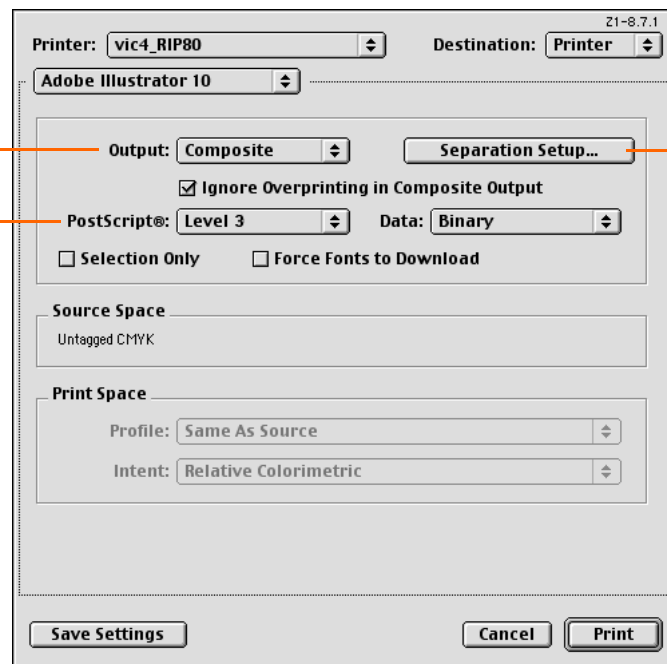
- 3 Select a printer.



- 4 Select Adobe Illustrator 10.

- 5 Select **Composite**.

- 6 Select **Level 3**.

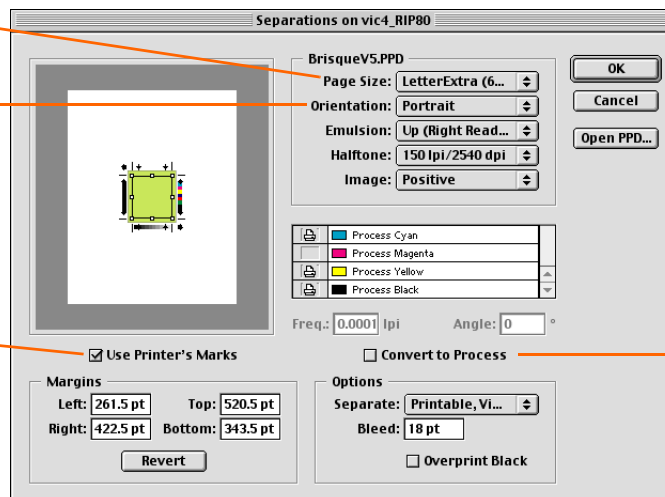


- 7 Click **Separation Setup**.

8 Select a page size.

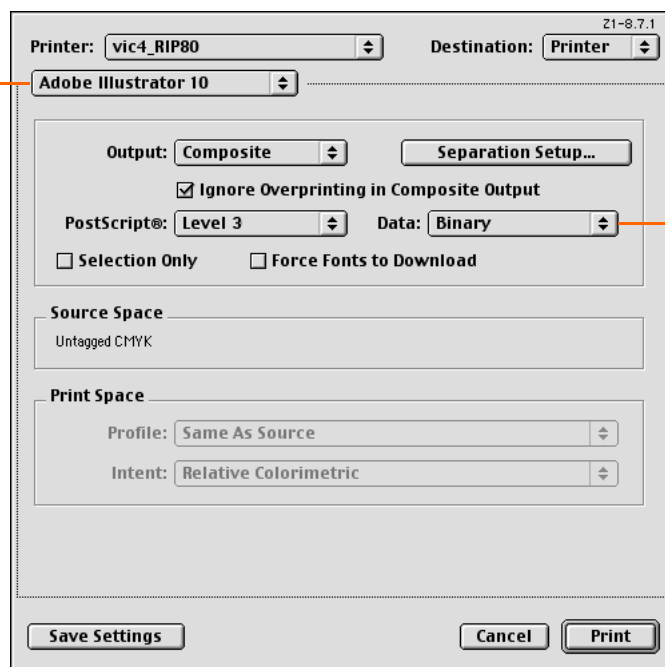
9 Select Portrait.

10 Select Use Printer's Marks if required.



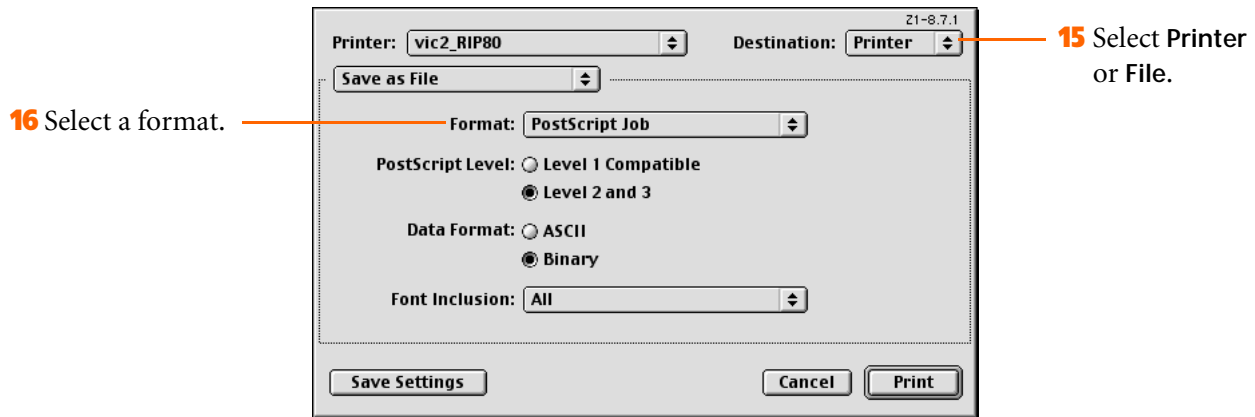
11 Select Convert to Process if required.

12 Click OK.



13 Select Binary.

14 Select Save As File.



- 17 a) If you selected **Printer** as the destination, click **Print**. A PostScript file is created and sent to the printer.
- b) If you selected **File**, click **Save**. A PostScript file is created and saved on the computer's disk.

Lesson 7

Create PDF Files in Acrobat Distiller 5.0



What You Need to Know

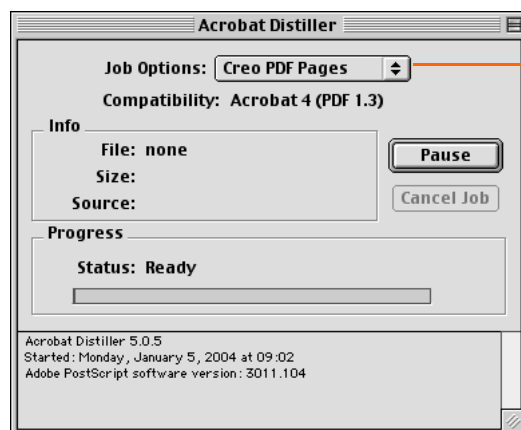
- Convert a PostScript file to PDF
- Set the Job Options



Note: The steps in this lesson are numbered in the order in which you should perform them. In most cases, the steps also point to the applicable screen areas in the illustrations. Be sure to follow the steps according to the numbered sequence.

Convert a PostScript File to PDF

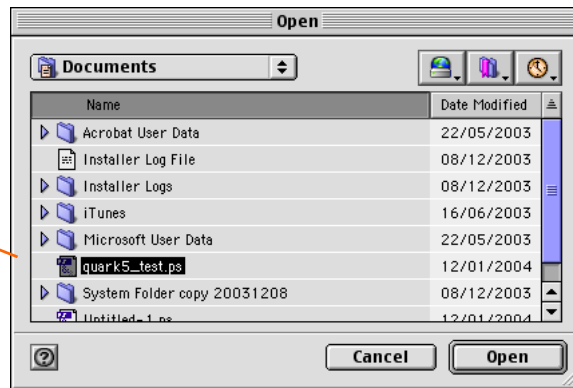
- 1 Copy the **Creo PDF Pages** settings file to the **Distiller Settings** folder. If you do not have this file, set the job options as described in the section *Set the Job Options* later in this lesson.
- 2 Open the Acrobat Distiller application.



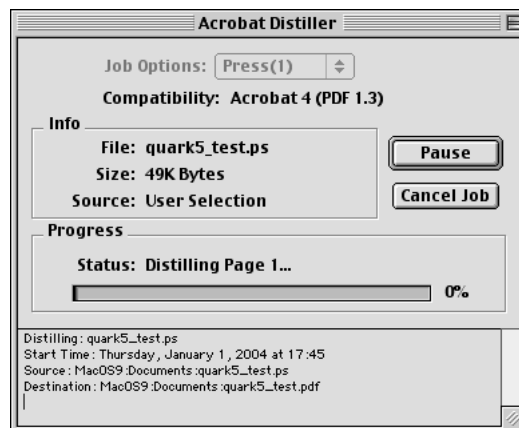
3 Select **Creo PDF Pages**.

4 From the Distiller **File** menu, select **Open**.

- 5 Locate the name of the PostScript file, and click it.



- 6 Click **Open**.
- 7 Type a name for the PDF file, and click **Save**.
The PDF file is created. The progress is indicated by a progress bar and messages.



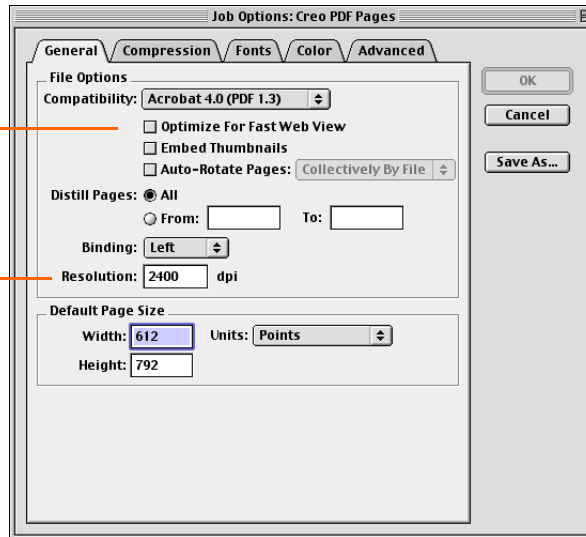
Set the Job Options

If you don't have the **Creo PDF Pages** settings file, follow this procedure to set the job options.

- 1 From the Distiller **Settings** menu, select **Job Options**.

- 2 Clear all the check boxes.

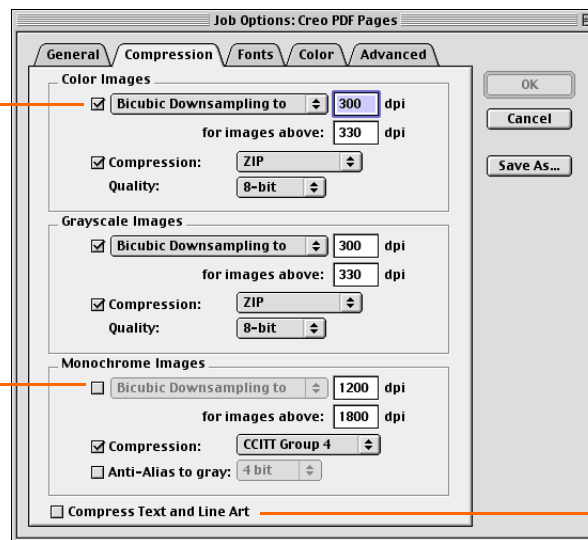
- 3 Type the resolution value of the exposure.



- 4 Click the **Compression** tab.

- 5 In the **Color Images** area, leave the settings as they are.

- 6 In the **Monochrome Images** area, clear the downsampling check box.



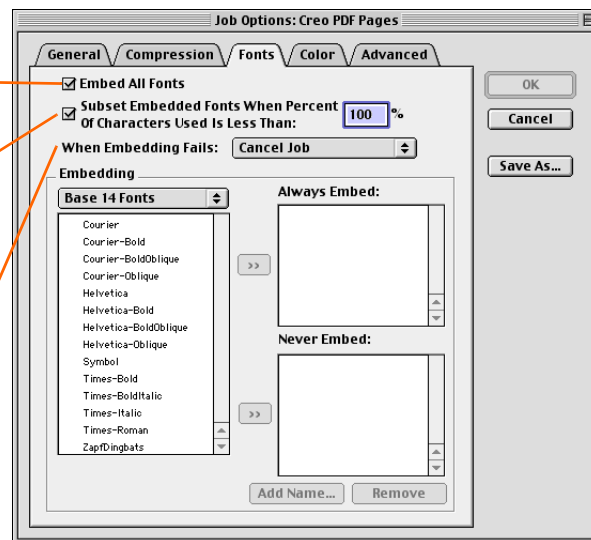
- 7 Clear the **Compress Text and Line Art** check box.

- 8 Click the **Fonts** tab.

9 Select Embed All Fonts.

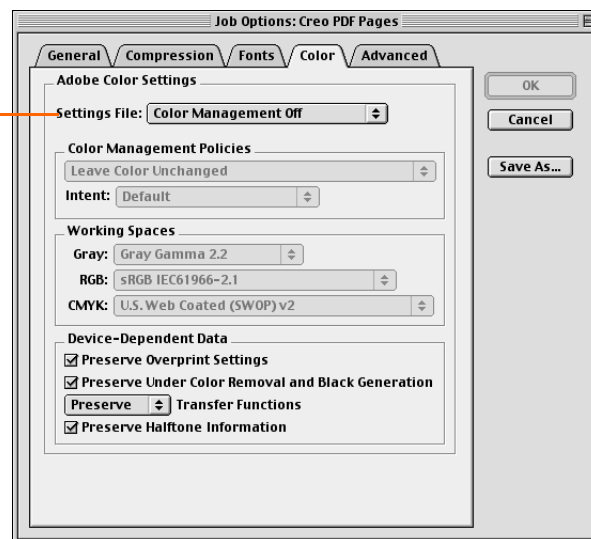
10 Select Subset Embedded Fonts When Percent of Characters Used is Less Than 100%

11 Set When Embedding Fails to Cancel Job.

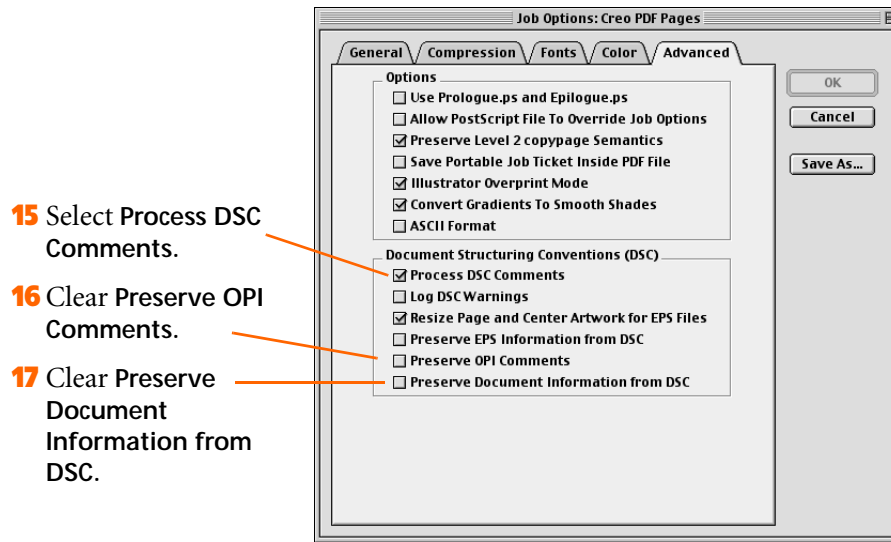


12 Click the Color tab.

13 Select Color Management Off.



14 Click the Advanced tab.



18 Click Save As.

19 In the dialog box that opens, type a name for the new file. A settings file is saved for future use.

MODULE 2

Generating an Output File on Mac OS X

Lessons in This Module

Lesson 1: Set Up a Printer

Lesson 2: Create Output Files in FreeHand 10

Lesson 4: Create Output Files in InDesign 2.02

Lesson 5: Create PostScript Files in QuarkXPress 6

Lesson 6: Create Output Files in Illustrator 10

Lesson 7: Create PDF Files in Acrobat Distiller 6.0

Lesson

1

Set Up a Printer



What You Need to Know

- Adding a Printer

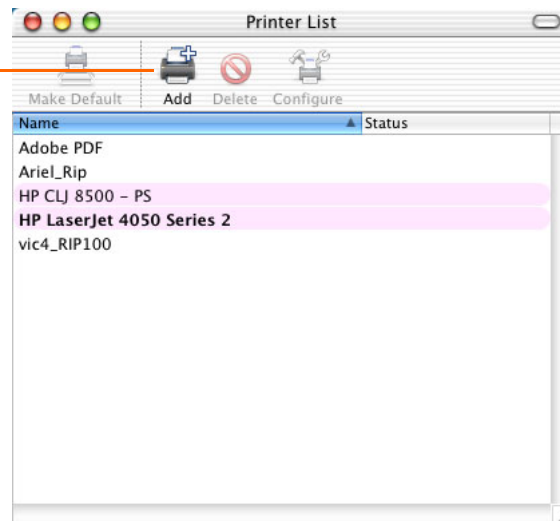


Note: The steps in this lesson are numbered in the order in which you should perform them. In most cases, the steps also point to the applicable screen areas in the illustrations. Be sure to follow the steps according to the numbered sequence.

Adding a Printer

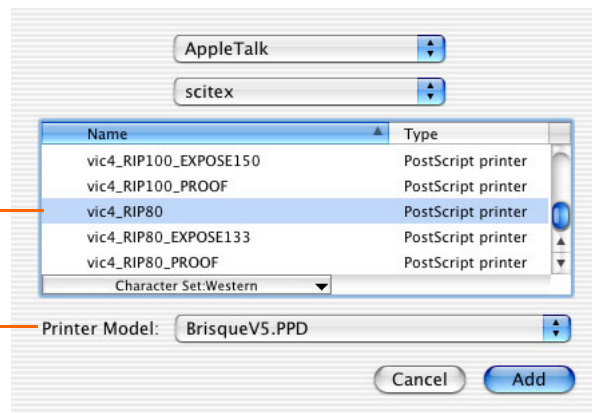
- 1 Locate on the Mac hard disk, the **Applications > Utilities** folder.
- 2 Double-click **Print Center**.

- 3 Click **Add**.



4 Select a network Printer.

5 Select the appropriate PPD.



6 Click **Add**.

Lesson
2

Create Output Files in FreeHand 10



What You Need to Know

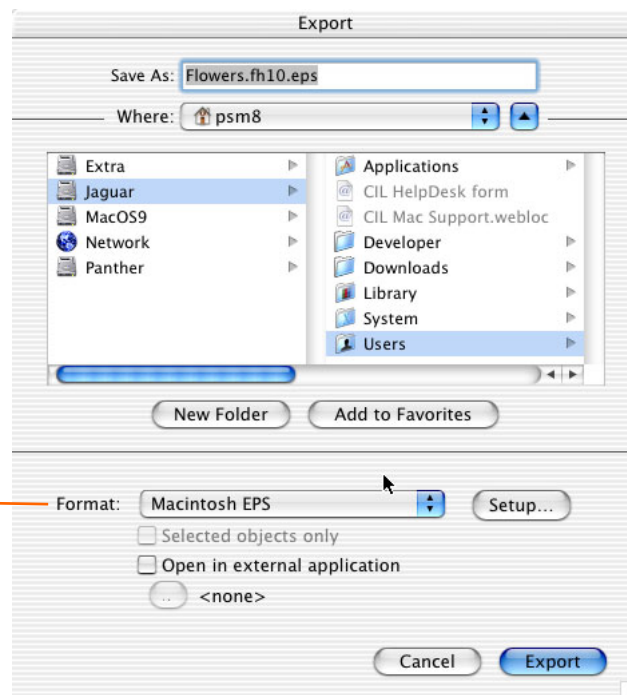
- Create an EPS file
- Create a PDF file
- Create a PostScript file



Note: The steps in this lesson are numbered in the order in which you should perform them. In most cases, the steps also point to the applicable screen areas in the illustrations. Be sure to follow the steps according to the numbered sequence.

Create an EPS File

- 1 Open a FreeHand file.
- 2 From the FreeHand **File** menu, select **Export**.

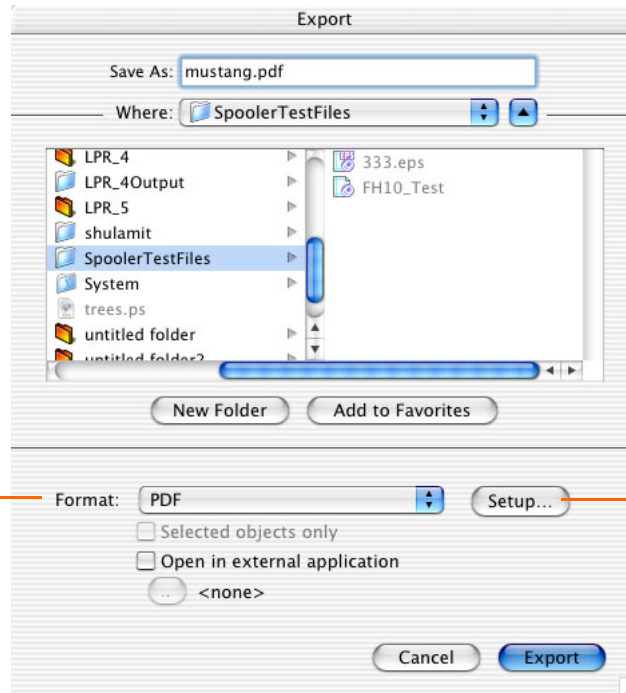


- 3 Select an EPS format.

- 4 Click **Export**. An EPS file is saved on the computer's disk.

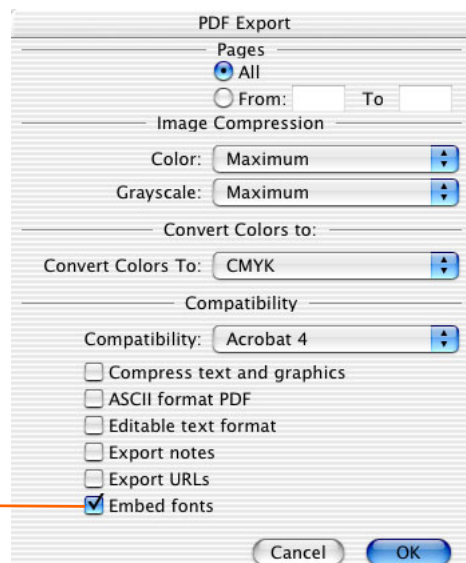
Create a PDF File

- 1 Open a FreeHand file.
- 2 From the FreeHand **File** menu, select **Export**.



- 3 Select **PDF**.

- 4 Click **Setup**.



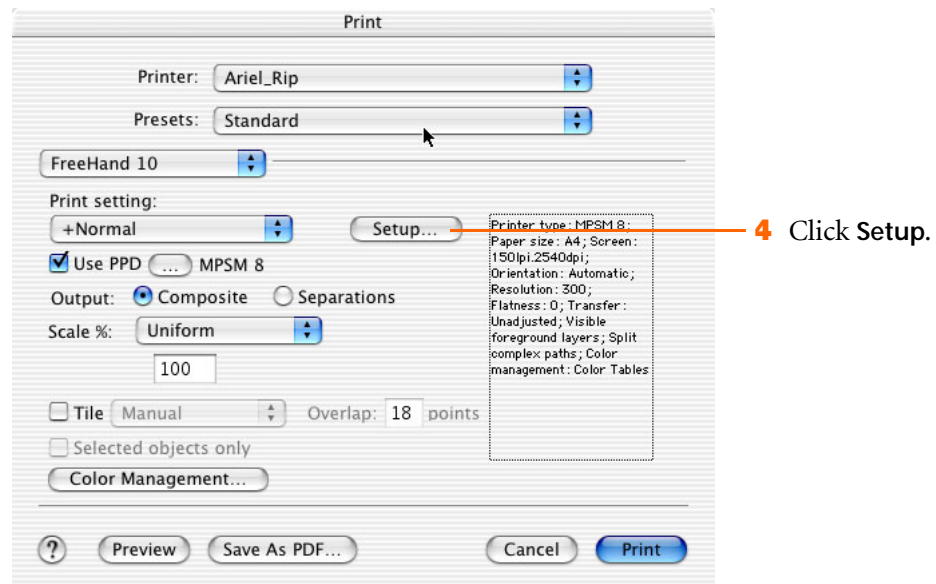
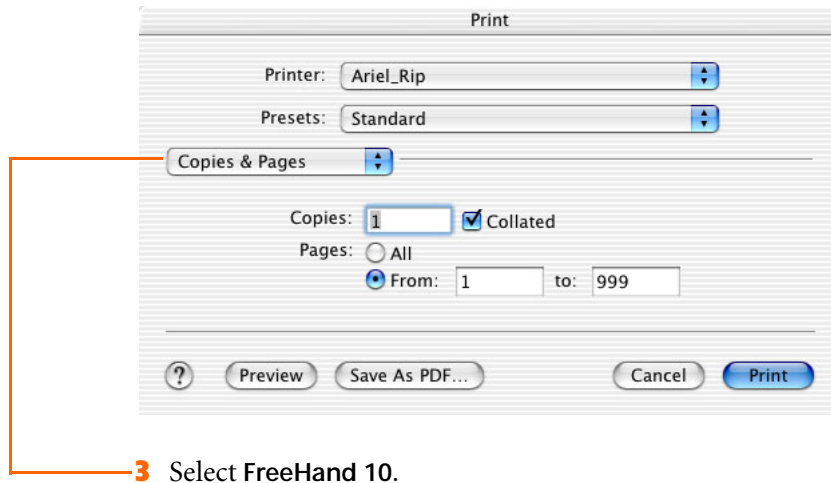
- 5 Select **Embed Fonts**.

- 6 Click **OK**.
- 7 In the Export dialog box, click **Export**. A PDF file is saved on the computer's disk.

Create a PostScript File

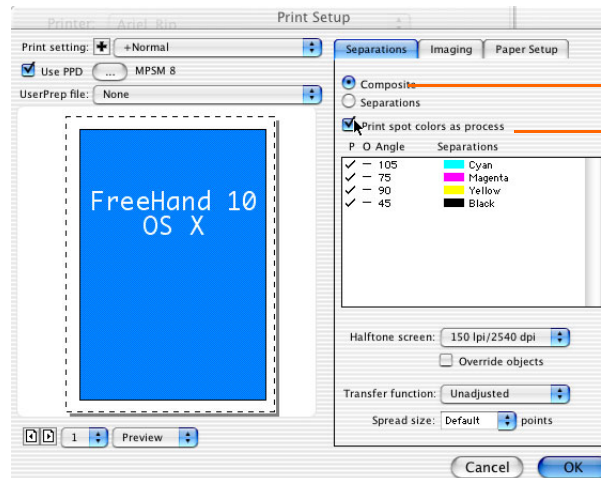
Macromedia® FreeHand® 10 software disregards the printer information that appears in the Page Setup dialog box. Instead, FreeHand provides a proprietary Print Setup dialog box, which you access from the Print dialog box.

- 1 Open a FreeHand file.
- 2 From the FreeHand **File** menu, select **Print**.





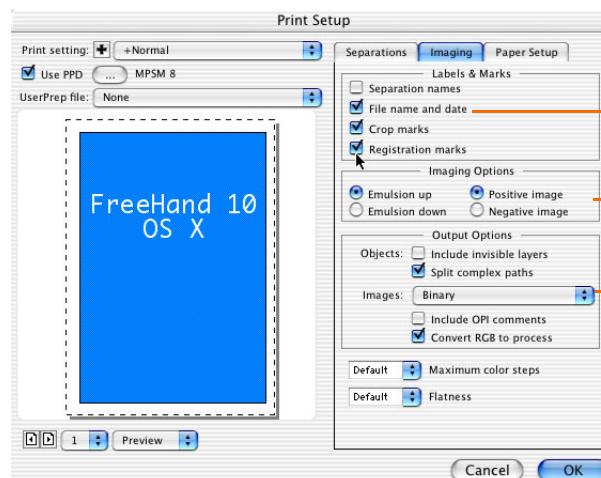
Important: Before you continue, make sure that the **Use PPD** check box is selected and that the name of the PPD file is the same as in the Print dialog box. If the name is not the same, select the **Use PPD** check box and click on the ellipsis button to select a PPD file.



5 Click **Composite**.

6 Select or clear the **Print Spot Colors as Process** check box as required.

7 Click the **Imaging** tab.



8 Clear the **Separation names** check box.

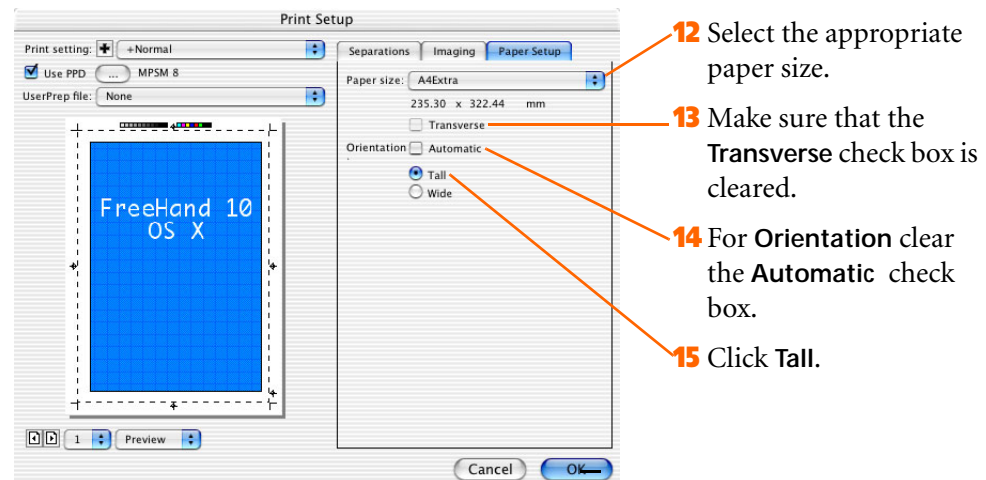
9 Select the marks you require.

10 Select **Binary**.

11 Click the **Paper Setup** tab.

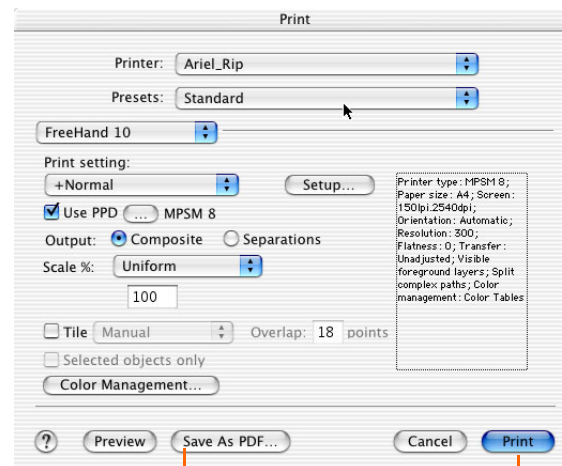


Note: You can add labels, crop marks, registration marks, and color bars either here or in the output device. If you add the marks in FreeHand, make sure that you select a large enough page size to contain the marks.



16 Click **OK** to close the Print Setup dialog box.

17 You can either print a PostScript File, or create and save a PDF file.



18 a) Click **Save As PDF** to create a PDF file on the computer's disk.

b) Click **Print** to create a PostScript file.

Lesson
3

Create Output Files in InDesign 2.02



What You Need to Know

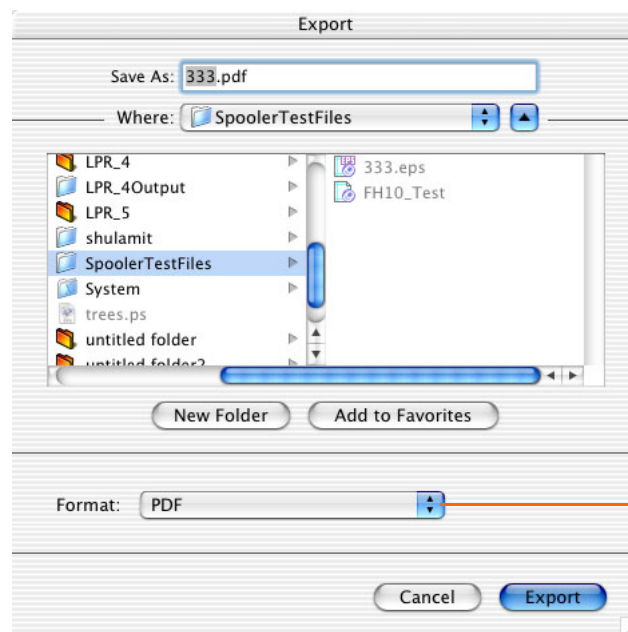
- Create a PDF file
- Create a PostScript file



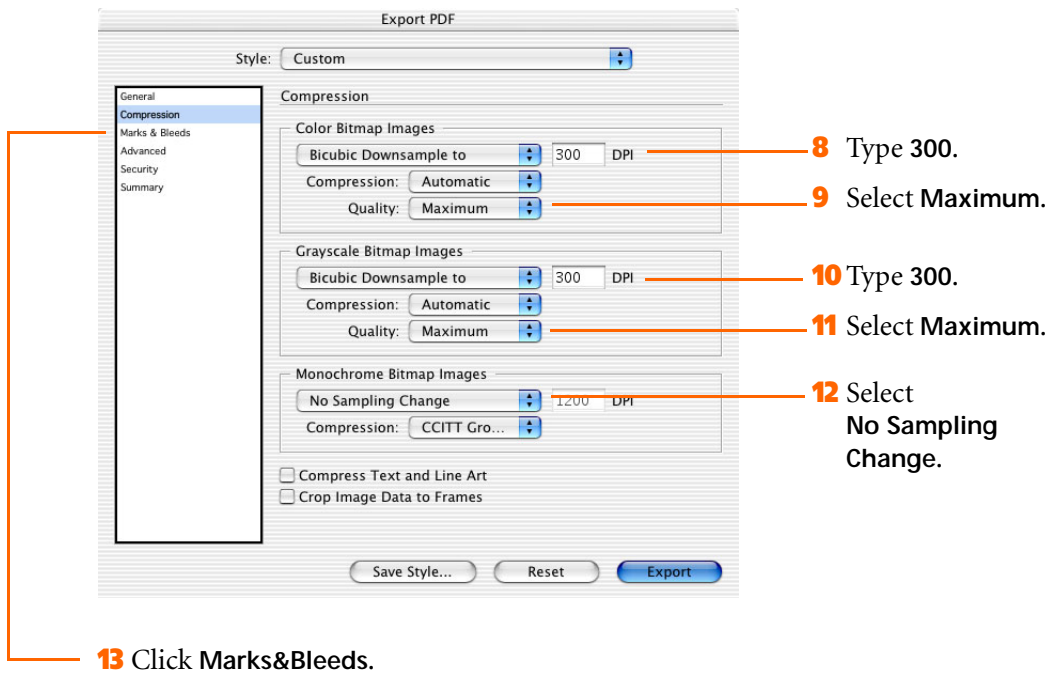
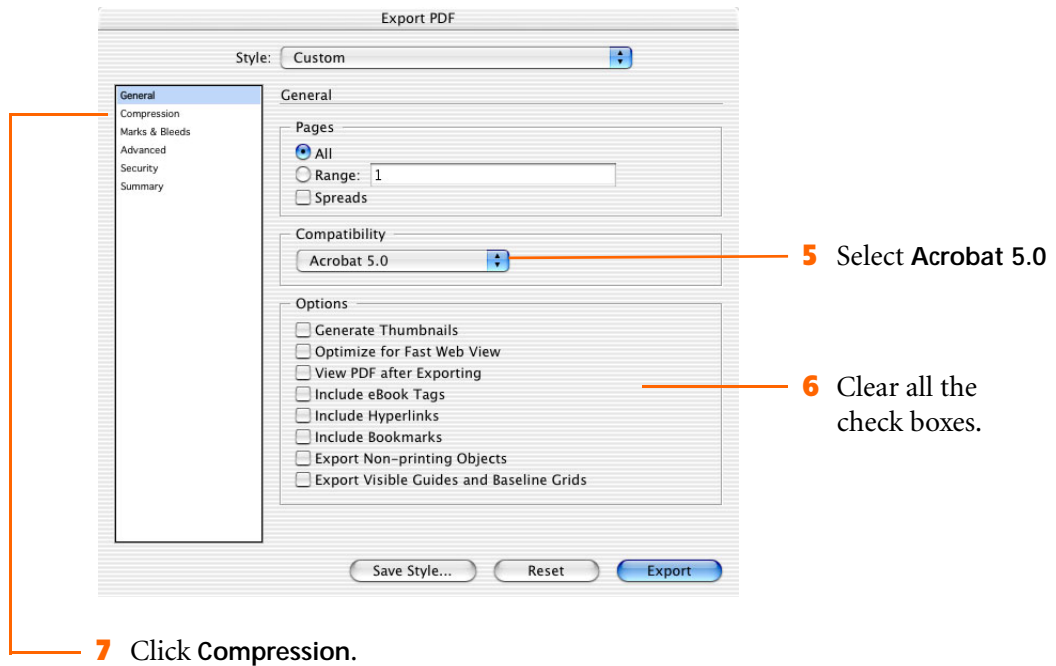
Note: The steps in this lesson are numbered in the order in which you should perform them. In most cases, the steps also point to the applicable screen areas in the illustrations. Be sure to follow the steps according to the numbered sequence.

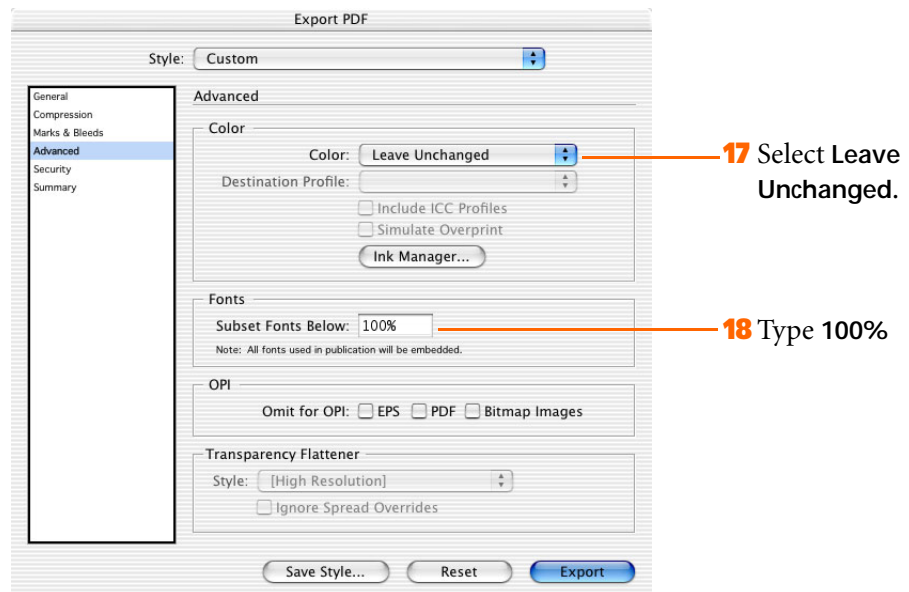
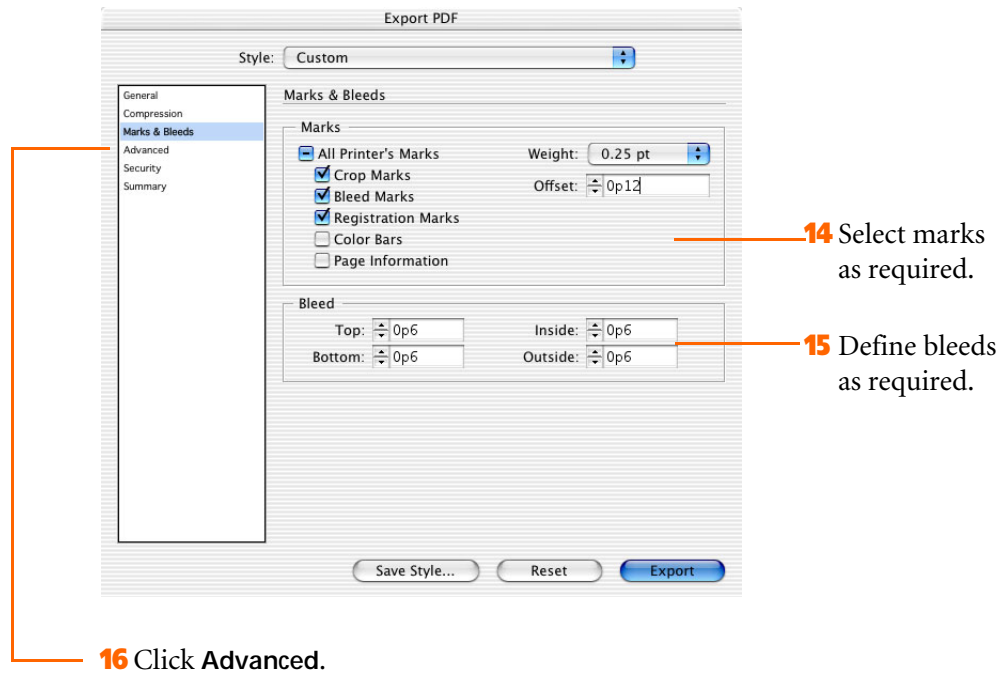
Create a PDF File

- 1 Open an InDesign file.
- 2 From the InDesign **File** menu, select **Export**.



- 4 Click **Export**. A PDF file is saved on the computer's disk.

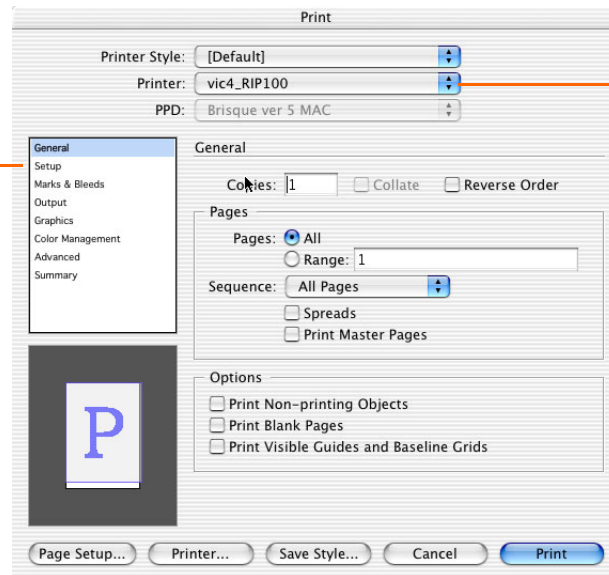




19 Click **Export**. A PDF file is saved on the computer's disk.

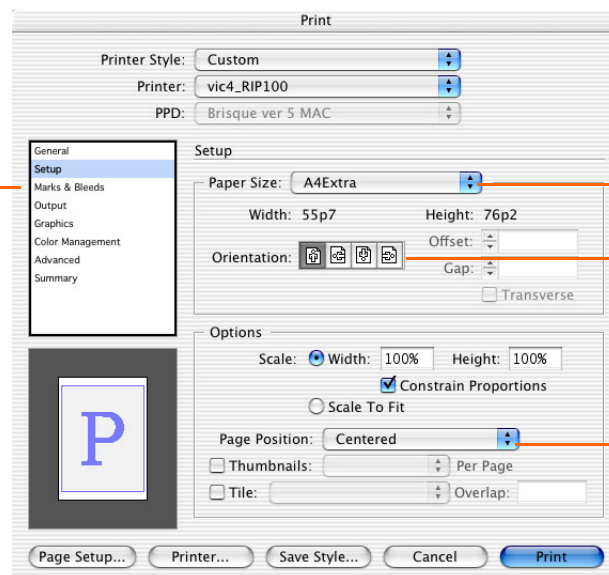
Create a PostScript File

- 1 Open an InDesign file.
- 2 From the InDesign **File** menu, select **Print**.



3 Select a printer.

4 Click **Setup**.

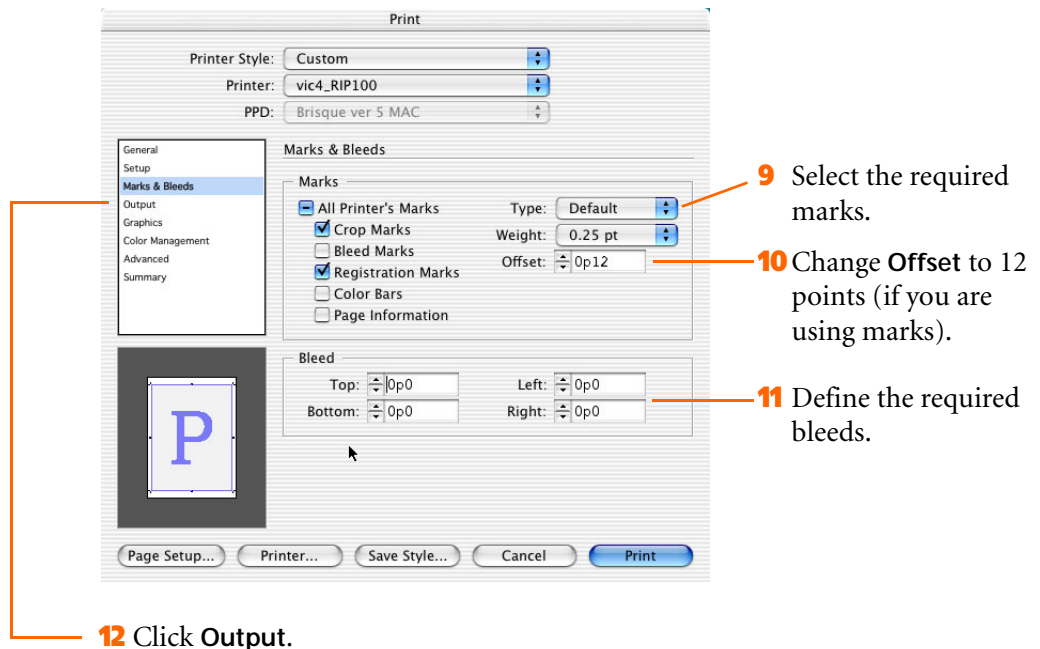


5 Select a paper size.

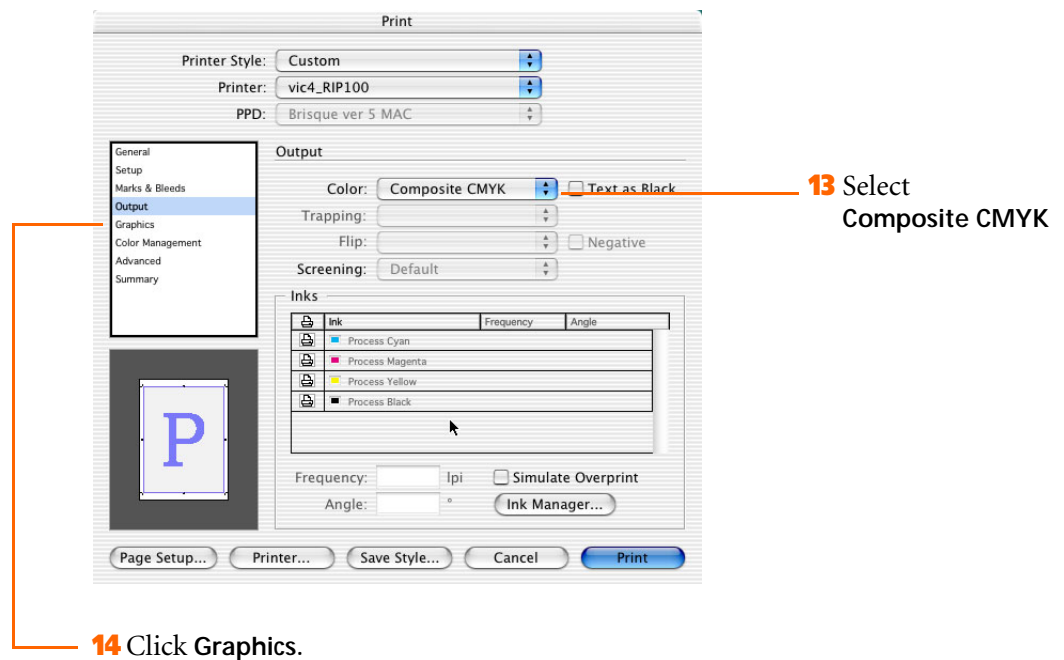
6 Make sure that **Orientation** is set to portrait.

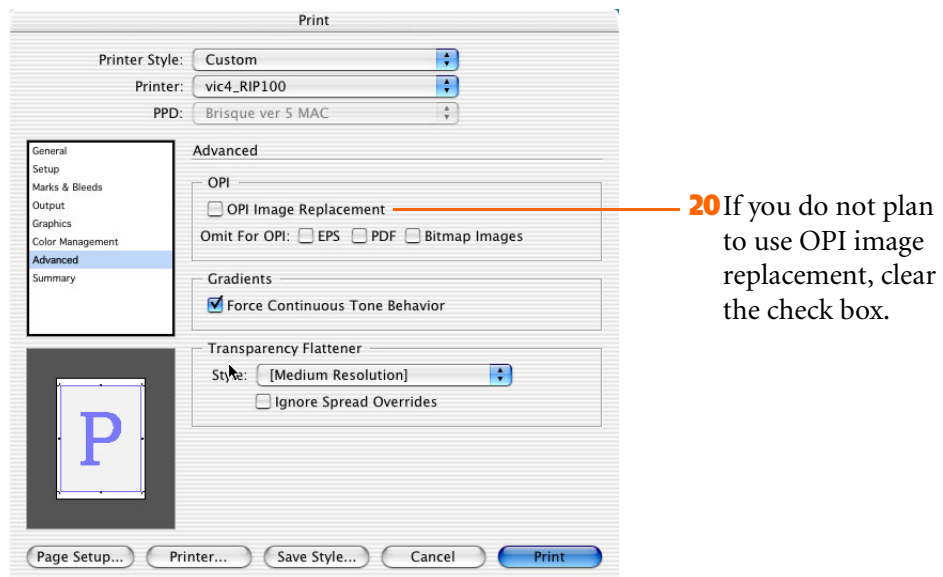
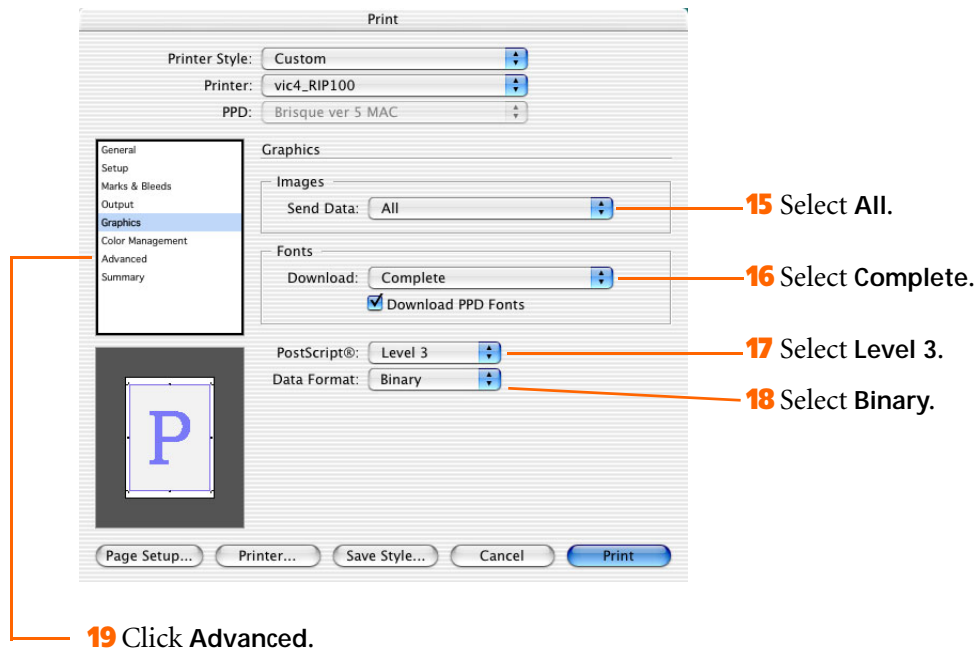
7 Select a setting for **Page Position**.

8 Click **Marks & Bleeds**.



Note: You can add labels, crop marks, registration marks, and color bars, either here or in the output device. If you add the marks in InDesign, make sure that you select a large enough page size to contain the marks.





21 Click **Print**. A PostScript file is created and sent to the printer.

Create PostScript Files in QuarkXPress 6



What You Need to Know

- Create a PostScript file
- Set Printer Specific Features for Brisque and PS/M

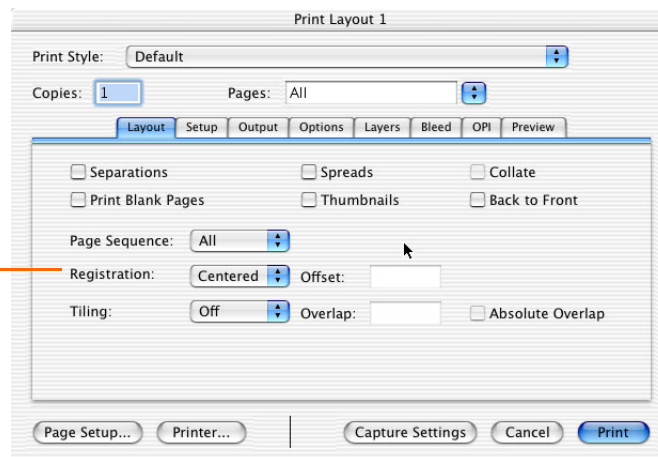


Note: The steps in this lesson are numbered in the order in which you should perform them. In most cases, the steps also point to the applicable screen areas in the illustrations. Be sure to follow the steps according to the numbered sequence.

Create a PostScript File

- 1 Open a QuarkXPress file.
- 2 From the QuarkXPress **File** menu, select **Page Setup** or **Print**.

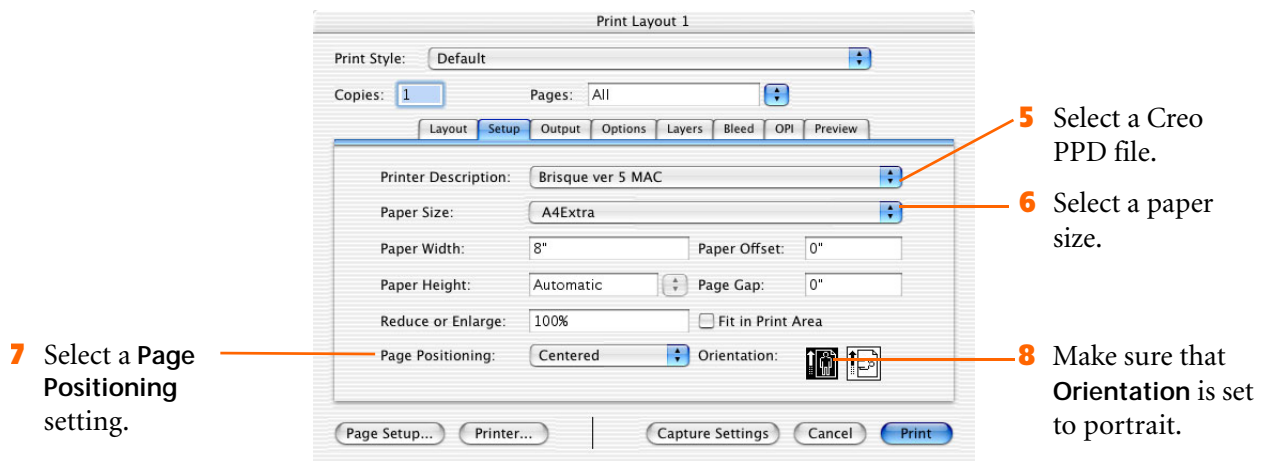
- 3 If you want to use marks, select **Centered** or **Off-center Registration**.



- 4 Click the **Setup** tab.



Note: You can add labels, crop marks, registration marks, and color bars, either here or in the output device. If you add the marks in QuarkXPress, make sure that you select a large enough page size to contain the marks.



9 Click the **Output** tab.

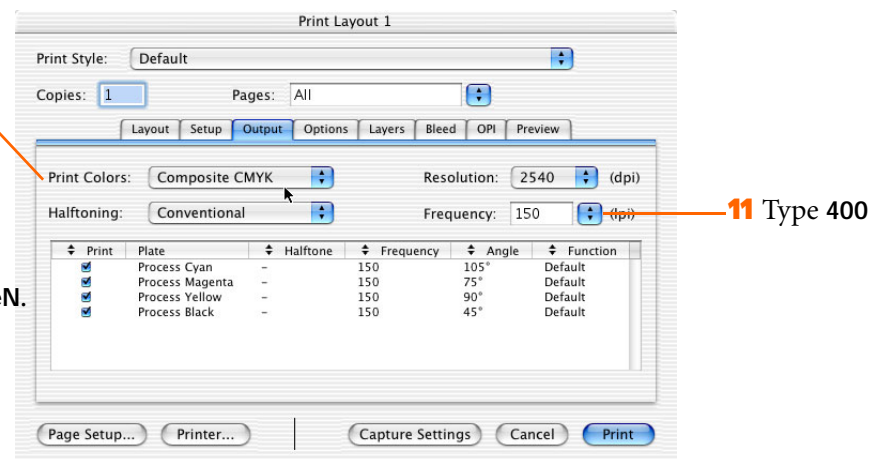


Note: If you want to set **Paper Size** to **Custom**, you must enter a setting manually for **Paper Height**. The automatic setting does not allow for page centering.

10 Select the **Print Colors** setting:

- To use process printing, select **Composite CMYK**.
- To retain the spot colors, select **DeviceN**.

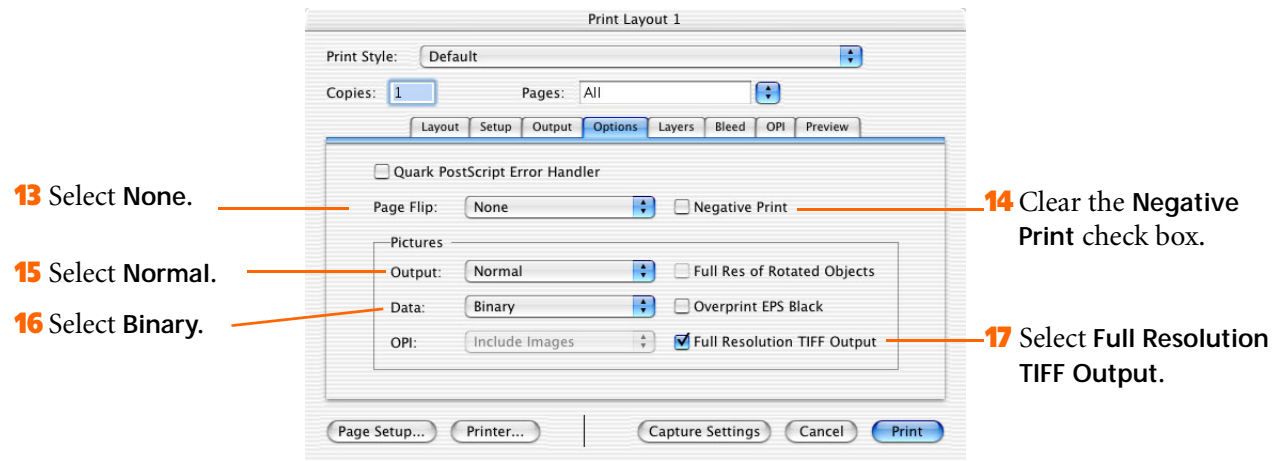
In this example we are using **Composite CMYK**.



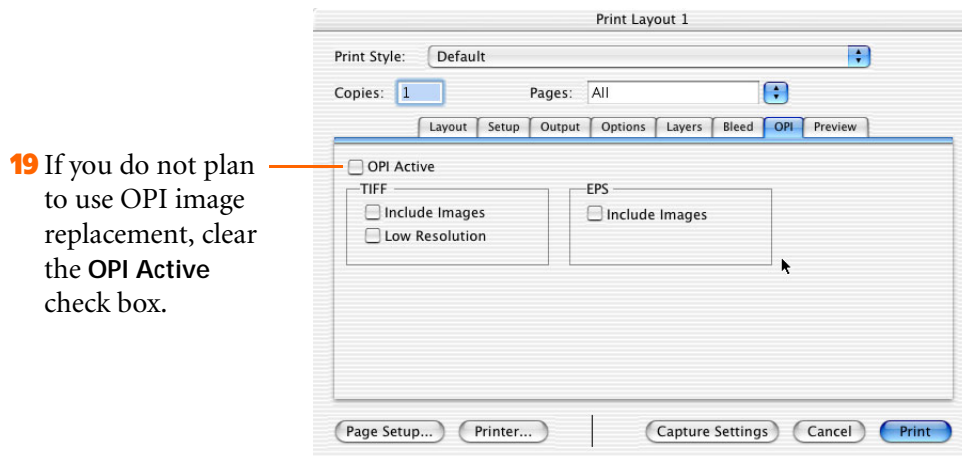
12 Click the **Options** tab.



Note: The **Halftoning**, **Resolution** and **Frequency** parameters are ignored by the Creo workflow software.



18 Click the **OPI** tab.



20 Click **Print**. A PostScript file is created and sent to the printer.

Set Printer Specific Features for Brisque and PS/M

If you want to change printer-specific settings, follow these steps:

1. In the QuarkXPress Print dialog box, click the **Printer** button.
2. From the list of printers, select a Brisque or PS/M printer.
3. In the option list, select **Printer Specific Options**.

For Brisque:

- a. In the QuarkXPress software, for the CMYK labels for **Quark 4+** option, select **Yes** to add marks; otherwise select **No**.
- b. For all the Brisque-related options, leave the default settings as they are. Changes in these settings override the Brisque template settings and effectively transfer the control of the RIP to QuarkXPress. For information about these settings, see the Brisque documentation.

For PS/M:

- In the QuarkXPress software, for the CMYK labels for **Quark 4+** option, select **Yes** to add marks; otherwise select **No**.
4. Click **Print** to close the dialog box and return to the QuarkXPress Print dialog box.

Lesson
5

Create Output Files in Illustrator 10



What You Need to Know

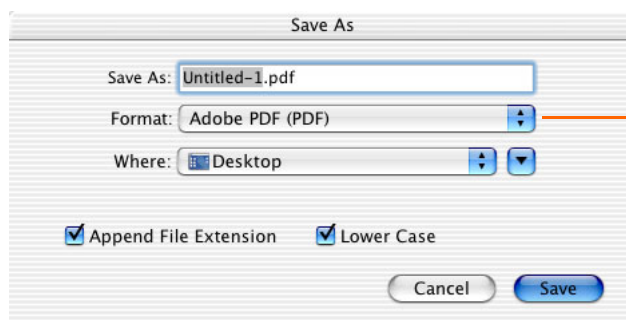
- Create a PDF file
- Create anEPS file
- Create a PostScript file



Note: The steps in this lesson are numbered in the order in which you should perform them. In most cases, the steps also point to the applicable screen areas in the illustrations. Be sure to follow the steps according to the numbered sequence.

Create a PDF File

- 1 Open an Illustrator file.
- 2 From the Illustrator **File** menu, select **Save As**.



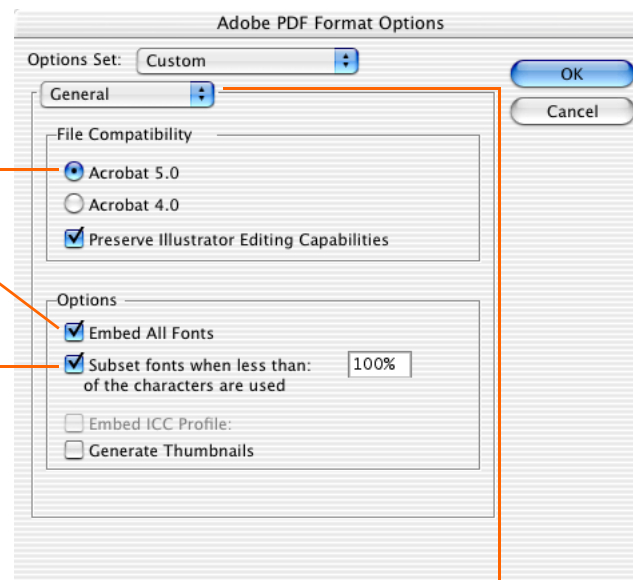
- 3 Select **Adobe PDF (PDF)**.

- 4 Click **Save**.

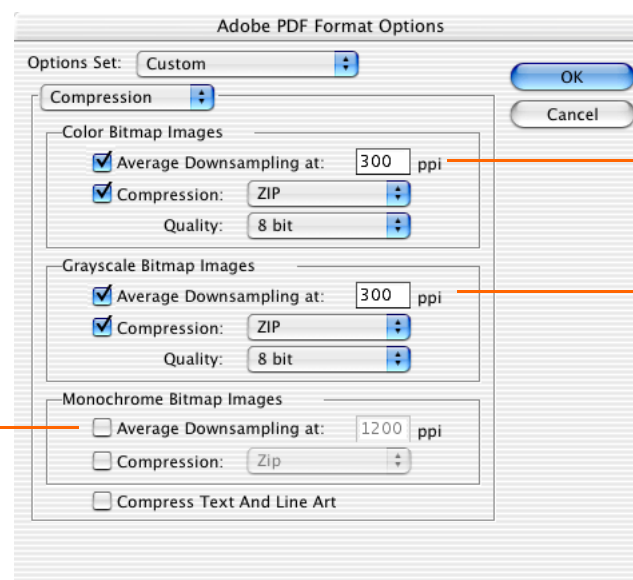
5 Select **Acrobat 5.0**

6 Select **Embed All Fonts**.

7 Select **Subset Fonts when less than 100% of the characters are used**.



8 Select **Compression**.



11 Clear the check boxes.

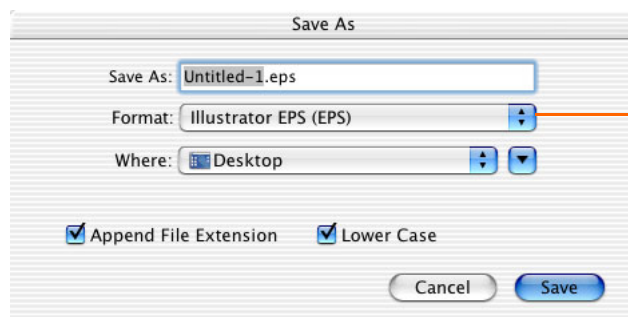
9 Leave the default settings unchanged.

10 Leave the default settings unchanged.

12 Click **OK**. A PDF file is created.

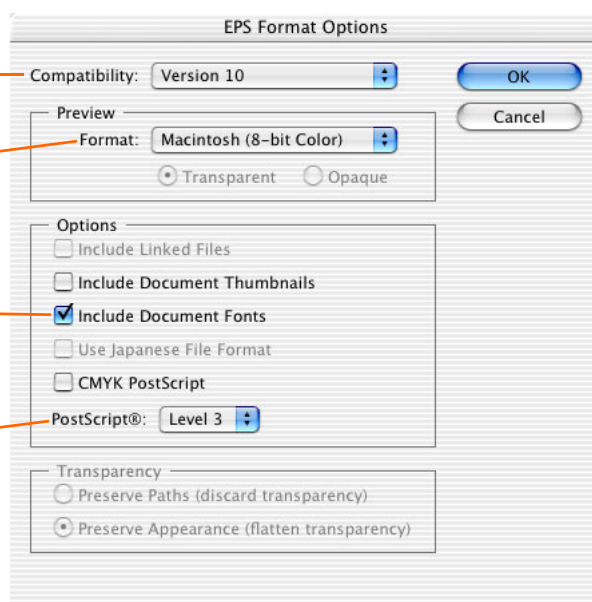
Create an EPS File

- 1 Open an Illustrator file.
- 2 From the Illustrator **File** menu, select **Save As**.



- 3 Select **Illustrator EPS (EPS)**.

- 4 Click **Save**.



- 5 Select **Version 10**.

- 6 Select **Macintosh (8-bit Color)**.

- 7 Select **Include Document Fonts**.

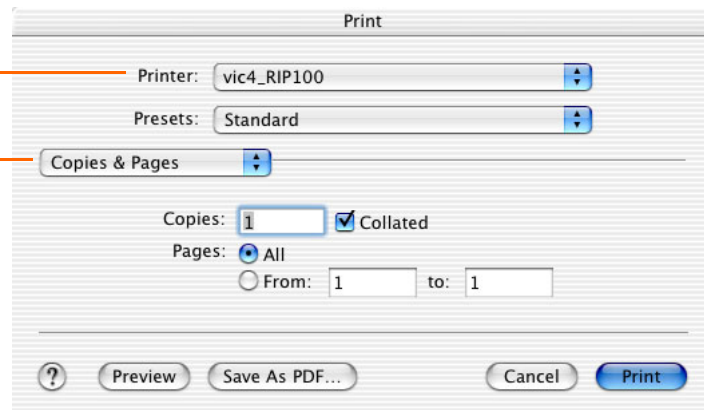
- 8 Select **Level 3**.

- 9 Click **OK**. An EPS file is created.

Create a PostScript File

- 1 Open an Illustrator file.
- 2 From the Illustrator **File** menu, select **Print**.

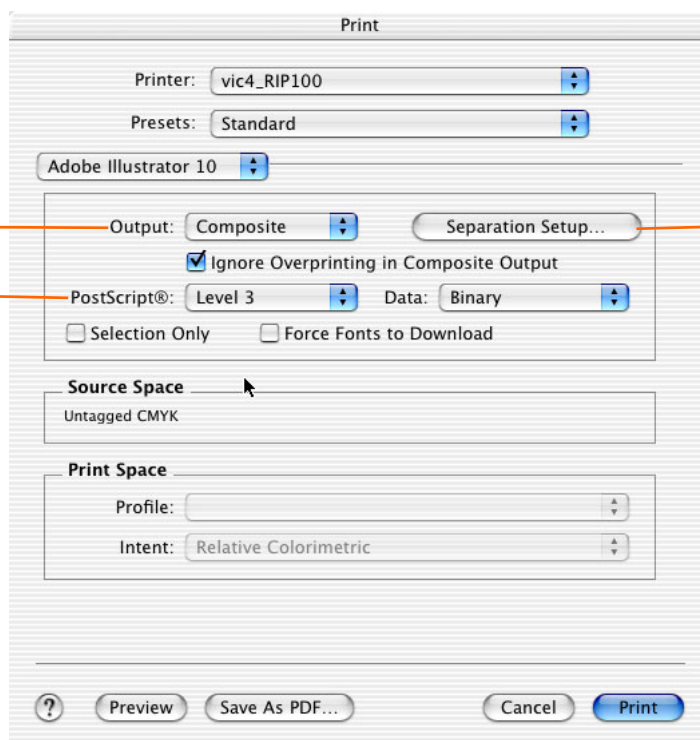
- 3 Select a printer.



- 4 Select **Adobe Illustrator 10**.

- 5 Select **Composite**.

- 6 Select **Level 3**.

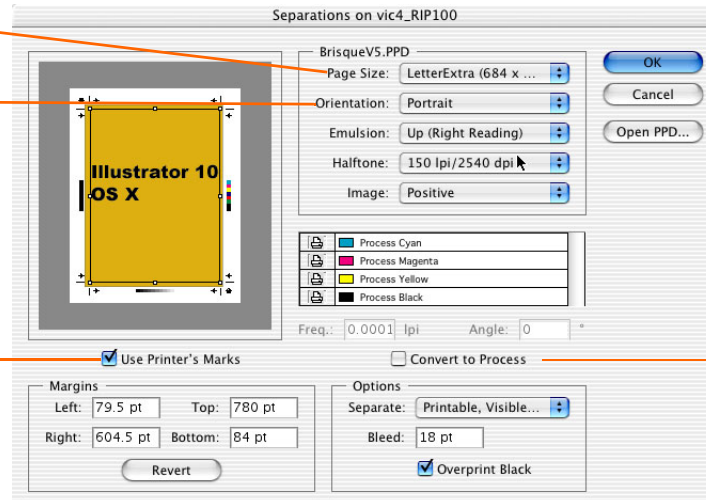


- 7 Click **Separation Setup**.

8 Select a page size.

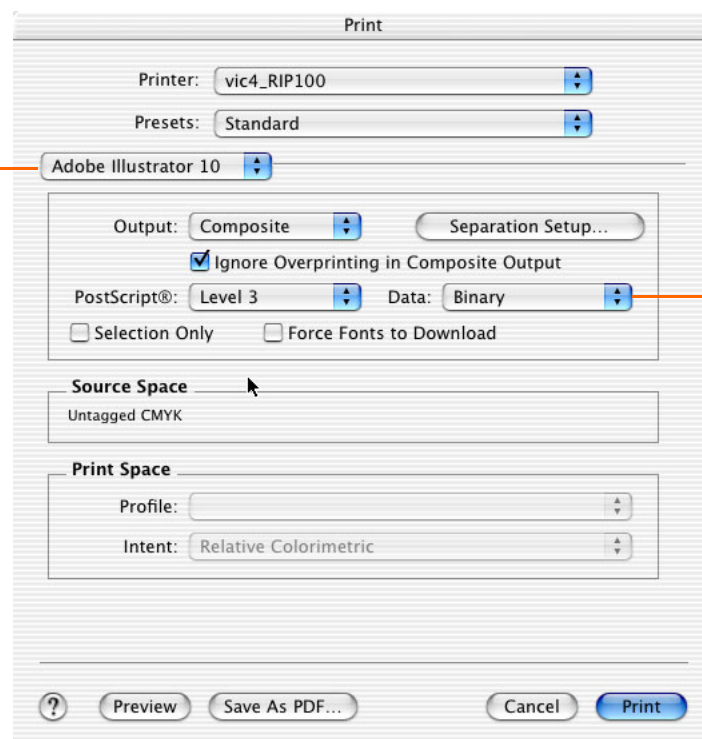
9 Select Portrait.

10 Select Use
Printer's Marks if
required.



11 Select
Convert to Process
if required.

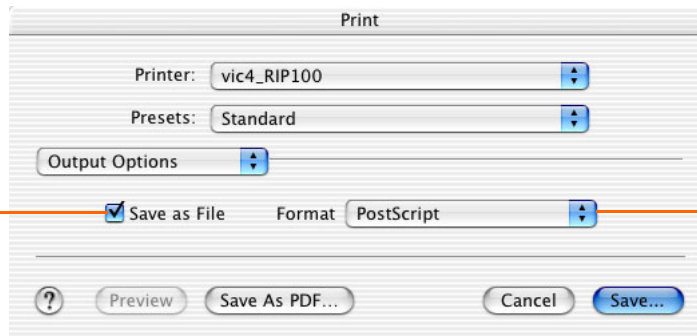
12 Click OK.



13 Select Binary.

14 Select Output Options.

16 Select **Save as File** if you want to save the file on the computer's disk.



15 Select a format.

- 17** You have several options to create a PostScript or PDF file. Follow one of the procedures described below:
- Click **Save As PDF** to create a PDF file.
 - If you selected **Save As File**, click **Save**. A PostScript file is created and saved on the computer's disk.
 - If you did not select **Save As File**, click **Print**. A PostScript file is created and sent to the printer.

Lesson
6

Create PDF Files in Acrobat Distiller 6.0



What You Need to Know

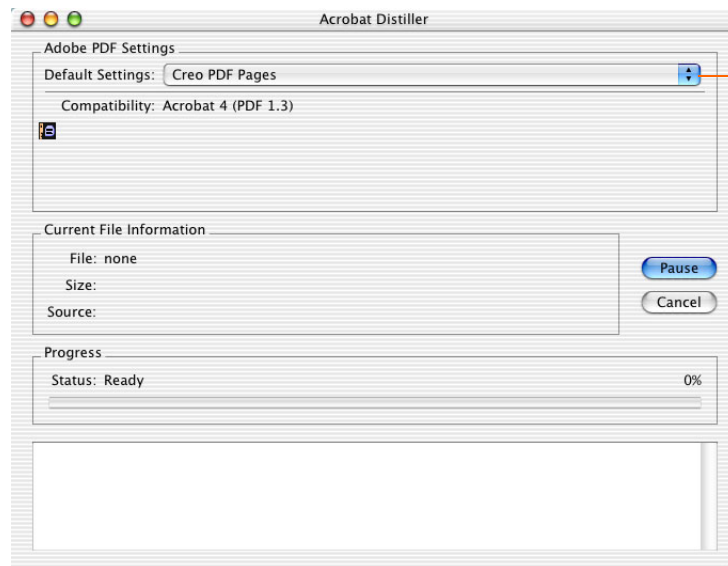
- Convert a PostScript file to PDF
- Set the Job Options



Note: The steps in this lesson are numbered in the order in which you should perform them. In most cases, the steps also point to the applicable screen areas in the illustrations. Be sure to follow the steps according to the numbered sequence.

Distill PostScript to PDF

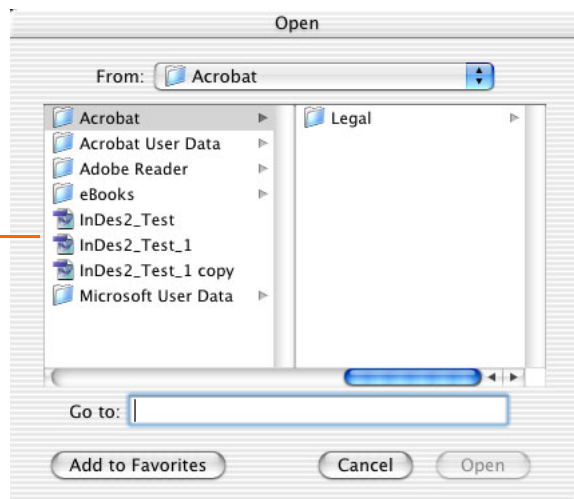
- 1 Open the Acrobat Distiller application.
- 2 In the **Settings** menu, click **Add Adobe PDF Settings...** and add the Creo PDF Pages job options file.



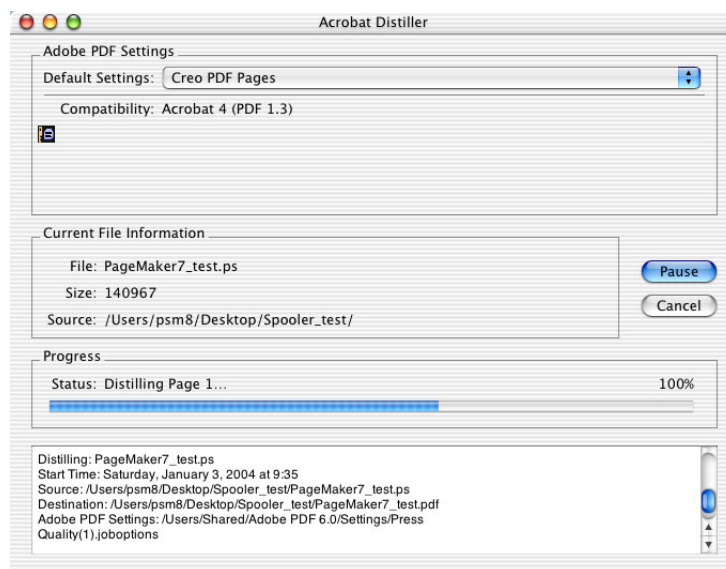
3 Select **Creo PDF Pages**.

- 4 From the Distiller **File** menu, select **Open**.

- 5 Locate the name of the PostScript file, and click it.



- 6 Click **Open**.
- 7 Type a name for the PDF file, and click **Save**.
The PDF file is created. The progress is indicated by a progress bar and messages.

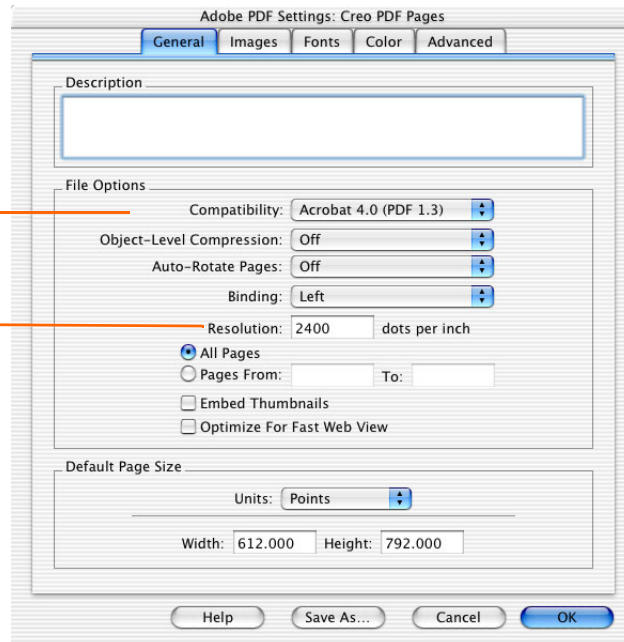


Set the Job Options

If you don't have the **Creo PDF Pages** settings file, follow this procedure to set the job options.

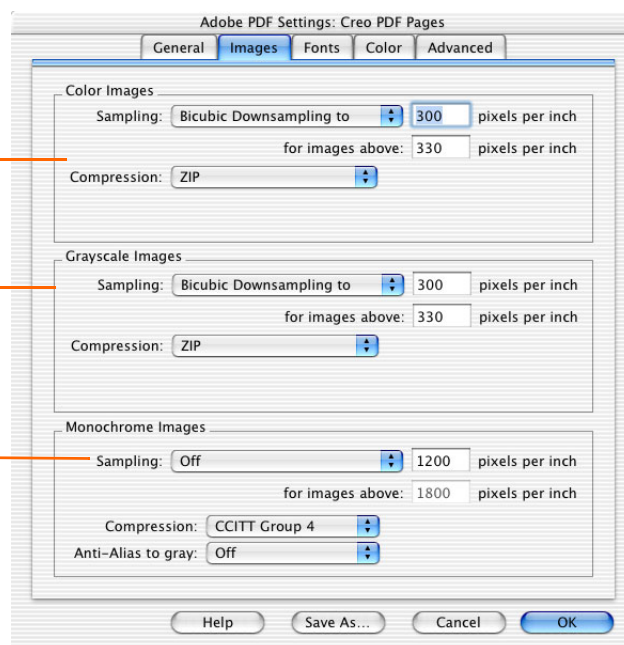
- 1 From the Distiller **Settings** menu, select **Edit Adobe PDF Settings**.

- 2 Leave the default settings unchanged.
- 3 Type the resolution value of the exposure.



- 4 Click the **Images** tab.

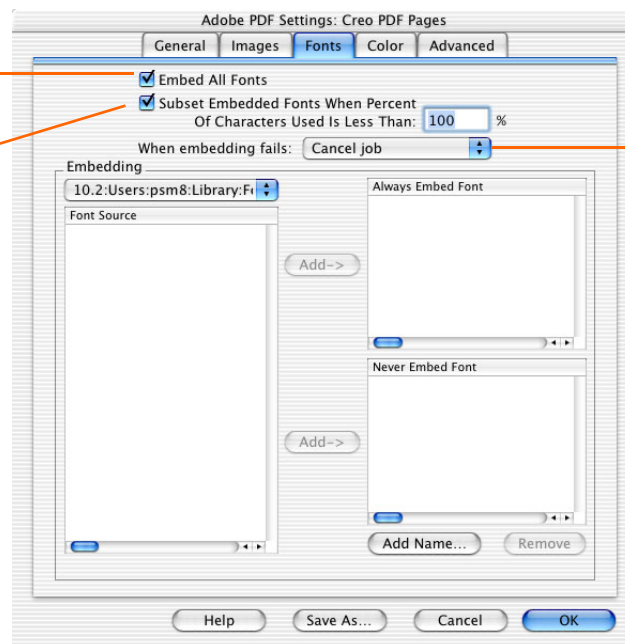
- 5 Leave the settings as they are.
- 6 Leave the settings as they are.
- 7 Select **Off**.



- 8 Click the **Fonts** tab.

9 Select Embed All Fonts.

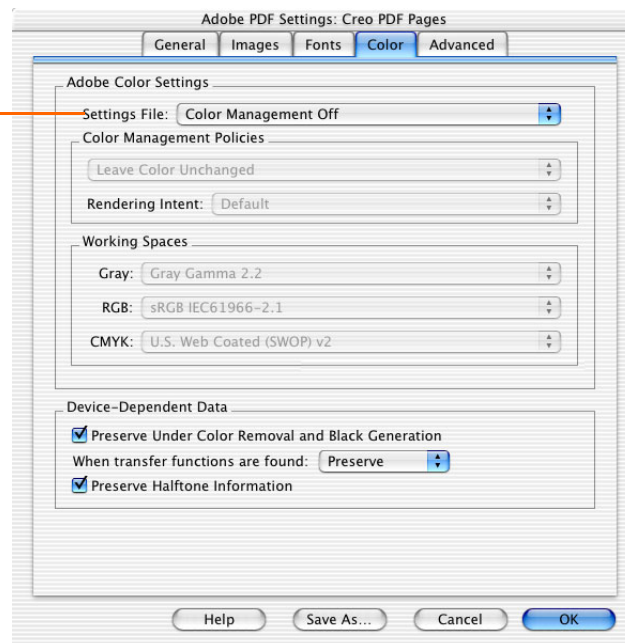
10 Select Subset Embedded Fonts When Percent of Characters Used is Less Than 100%.



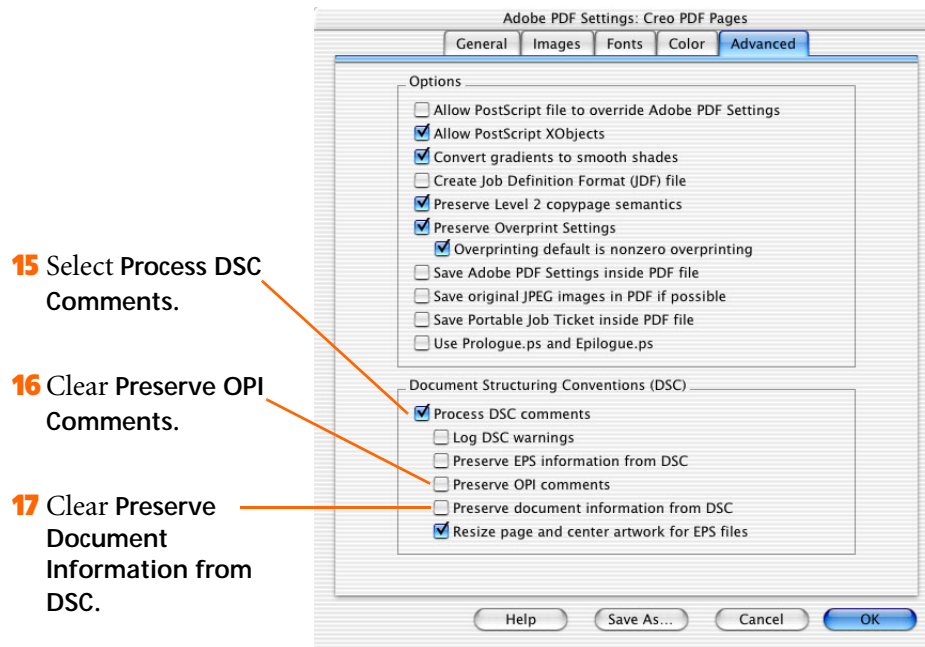
11 Set When Embedding Fails to Cancel Job.

12 Click the Color tab.

13 Select Color Management Off.



14 Click the Advanced tab.



18 Click **Save As**.

19 In the dialog box that opens, type a name for the new file. A settings file is saved for future use.

Appendix: PostScript Terms and Concepts

What Is PostScript?

Printers and computers speak different languages. When you print a document from a DTP application, you are sending a description of the document in a language that the printer can understand.

PostScript is a programming language introduced by Adobe to describe graphics and text in a device-independent manner. Device independence means that the image is described without any reference to the specific device's printing features, such as resolution, so that the same description can be used on any PostScript output device.

What Is a RIP?

RIP stands for raster image processor. RIPing means converting a PostScript file to a high-resolution bitmap, a necessary process in typographic-quality printing. In high-end printing, RIPing is performed by the PostScript interpreter that resides in a PostScript output device, such as a filmsetter or a platesetter.

What Is a PostScript File?

A PostScript file is a file that uses the PostScript programming language to describe a page or document containing text, vector graphics, scanned images, or any combination of these elements.

How Is a PostScript File Created?

A PostScript file is generated by a printer driver when you perform either of these actions:

- Select the **Print to File** option and designate any folder as the destination.
- Print directly to a network printer. In this case, the PostScript file is created on the fly and placed in the printer's queue.

What Is an EPS File?

EPS stands for encapsulated PostScript. An EPS file is a PostScript file in all respects. This format is used mainly for creating graphics and images that will be incorporated in DTP documents and must therefore conform to strict requirements. EPS files as a rule consist of only one page, and file size is dictated by the graphic elements that it contains.

How Is an EPS File Created?

An EPS file can be generated in a limited number of applications, including FreeHand, Illustrator, and Adobe Photoshop®, which use built-in (native) application tools without involving the inherent print functionality of the Mac printer driver. In such graphics applications, you typically create an EPS file by selecting the **Save As** or **Export** command.

What Is a PDF File?

The PDF workflow is an enhancement of the PostScript workflow. A PDF file is a PostScript file that has already been interpreted by a PostScript RIP. You can view the PDF file on the screen and check it for problems. A PDF file is convenient for transporting to other computers because it is more compact than a PostScript file.

How Is a PDF File Created?

There are several ways to create a PDF file:

- "Distill" a PostScript file with Acrobat Distiller
- Print from an application to Acrobat Distiller. This method creates a PDF file on the fly.
- Save a file in PDF format directly in a DTP application. This option is available only in some DTP applications.

What Is a PostScript Printer Driver?

A PostScript printer driver is software that converts graphic data (illustrations, text, and images) to PostScript commands that can be understood and imaged by a PostScript output device.

What Is a PPD File?

PostScript is a generic, device-independent language. Theoretically, therefore, we would be able to use the same PostScript file on all PostScript output devices. However, all output devices are not created equal. Devices differ in factors such as resolution, the size of the output, and color capabilities. The only solution for a standard PostScript file would be to create a file that supports just those features shared by all devices and ignores the extended capabilities offered by some devices. Obviously this solution is problematic. A PostScript printer description (PPD) file provides an answer, by supplying the PostScript printer driver with detailed information regarding the output device.

PPD files describe the fonts, paper sizes, resolution, and other features that characterize an output device. PostScript printer drivers use PPD files to determine how to print your document. If you do not select the proper PPD file, your document might not print correctly or the printer's features might not all be available when you print.

